

## DESCRIPTION

- Metal construction with various finishes identified by suffix
- Flexible supply lines with 3/8" compression fittings
- Includes metal pop-up waste assembly
- Includes optional 3 hole deck plate (escutcheon)

## OPERATION

- Lever style handle with red & blue indicators
- Temperature controlled by 90 degrees arc of handle travel

## FLOW

- Water usage is limited to these maximum flow rates as indicated by the corresponding product markings
- 1.0 gpm max (3.8L/min) at 60 psi

## CARTRIDGE

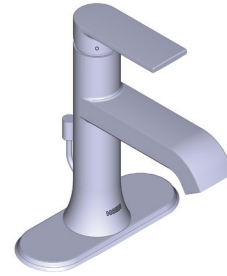
- Ceramic disc technology
- Non-metallic and non-ferrous materials
- Single body construction for easy replacement

## STANDARDS

- Third party certified to: WaterSense®, ASME A112.18.1/CSA B125.1 and all applicable requirements referenced therein
- Certified to NSF 61/9 & 372
- Products marked with 1.0 gpm are compliant with California water efficiency regulations
- Complies with California Proposition 65 and with the Federal Safe Drinking Water Act
- **ADA** ♿ for lever handle

## WARRANTY

- Lifetime limited warranty against leaks, drips and finish defects to the original homeowner
  - 10 year limited warranty when used in a multifamily installation
  - 5 year limited warranty when used in a commercial installation
- Visit [www.moen.com/support](http://www.moen.com/support) for complete details and limitations



## GENTA™LX

### One-Handle Lavatory Faucet

**MODELS:** 6706 Series

#### NOTE:

*This faucet is designed to be installed through 1 hole or 3 holes that are 1-1/4" (32mm) diameter and 2" (51 mm) on center*

