

DESCRIPTION

- G1/2 standard pipe thread
- ABS material with Chrome finish

OPERATION

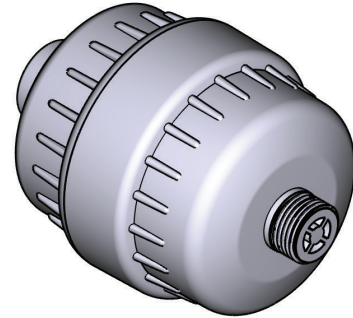
- Filter element can be changed and installed easily
- Influent water quality request for municipal tap water

REPLACEMENT

- Replace the cartridge once a year or earlier depending on water quality and use volume

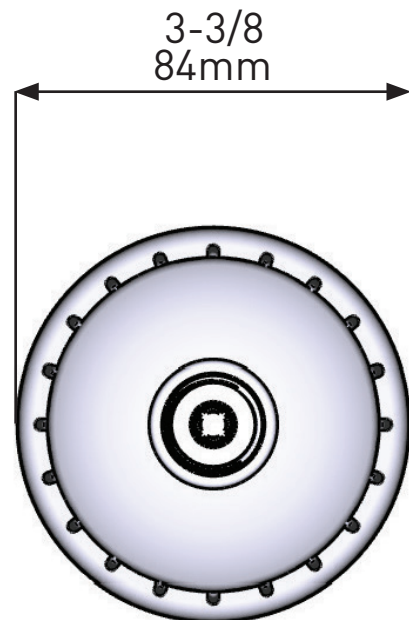
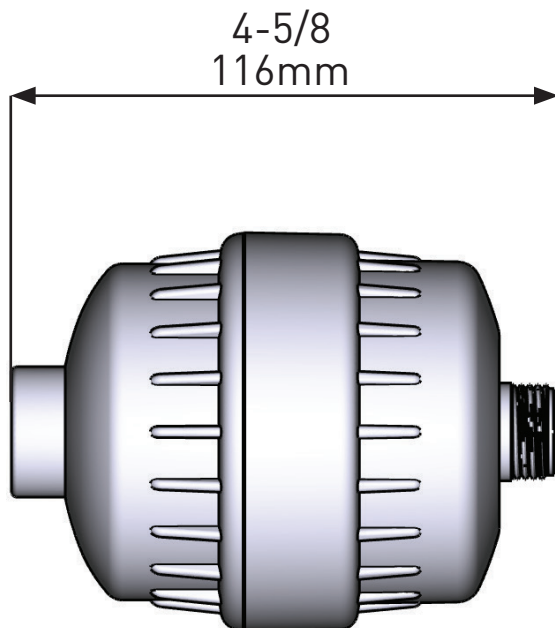
WARRANTY

- 5 years limited warranty for filter housing (F2300), filter housing and shower head (F2302)
- 6 months limited warranty for filter cartridge (F2301)



SHOWER FILTER

MODELS: F2300, F2301, F2302



CRITICAL DIMENSIONS DO NOT SCALE

DESCRIPTION

- Fixed mount showerhead
- Chrome finish
- 1/2" IPS connection

OPERATION

- 4 functions
- Rotate outer ring to select function

FLOW

- Designed to deliver 1.75 gpm (6.6 L/min) MAX at 80 psi (for models manufactured after 3/1/18)
- Designed to deliver 2.0 gpm (7.6 L/min) MAX at 80 psi (for models manufactured before 3/1/18)

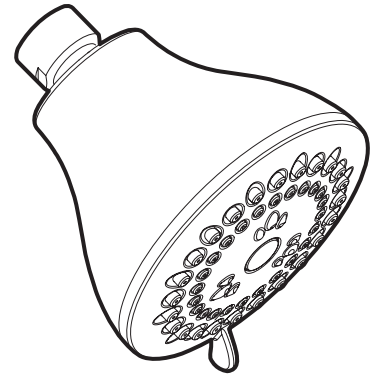
STANDARDS

- Third party certified at Watersense®, ASME A112.18.1/ CSA B125.1 and all applicable requirements referenced therein
- Products marked with 1.75 gpm are compliant with California water efficiency regulations

WARRANTY

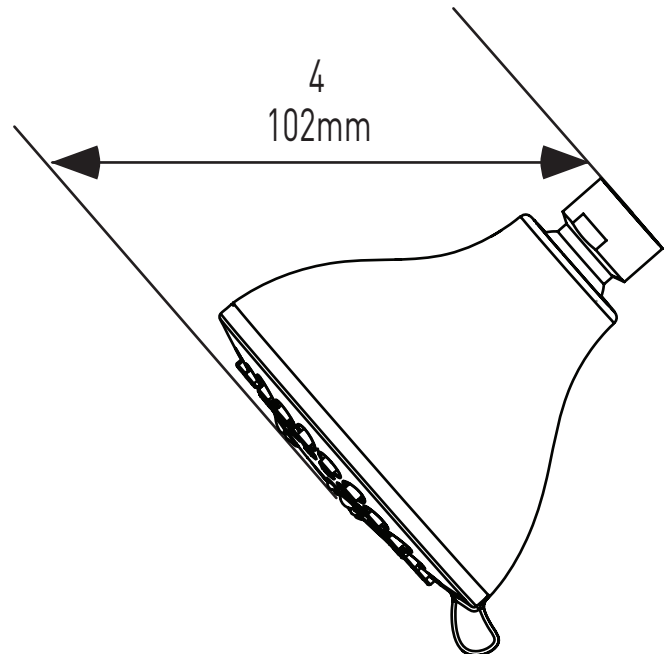
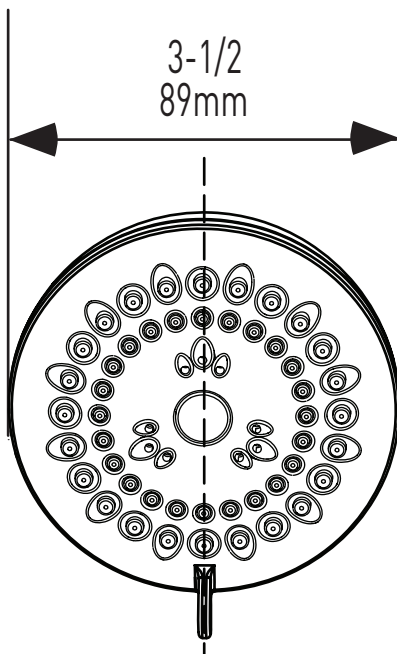
- Lifetime limited warranty against leaks, drips and finish defects to the original homeowner
- 10 year limited warranty when used in a multifamily installation
- 5 year limited warranty when used in a commercial installation

Visit www.moen.com/support for complete details and limitations



Alder™
4-Function Showerhead

MODELS: F2302



CRITICAL DIMENSIONS DO NOT SCALE