

# MOEN<sup>®</sup>

## COMMERCIAL

# Specifications

*There is more than 1 version of this model.  
Page down to identify the version you have.*

### FAUCET DESCRIPTION

- Chrome plated brass construction
- 1/2" IPS connections


### OPERATION

- Lever style handles with hot and cold color indicators and vandal resistant screws

### CARTRIDGE

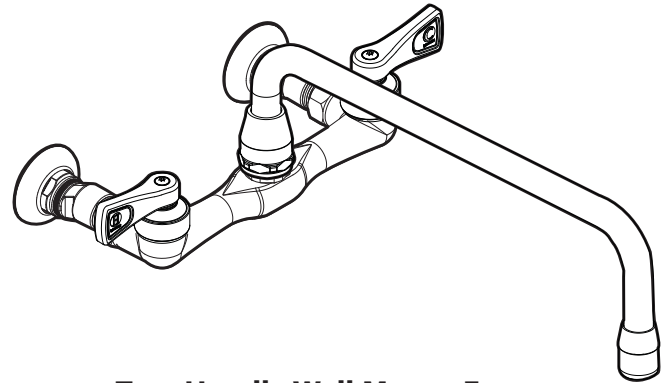
- Ceramic disc cartridge
- Nonmetallic and nonferrous material
- 1/4 turn operation

### STANDARDS

- Designed and manufactured to comply with the requirements of: ASME A112.18.1/CSA B-125.1 and all specifications referenced therein
- Contains no more than 0.25% weighted average lead content
- Certified to ANSI/NSF 61/9
- Complies with California Proposition 65 and the Federal Safe Drinking Water Act
- **ADA**  for lever handles

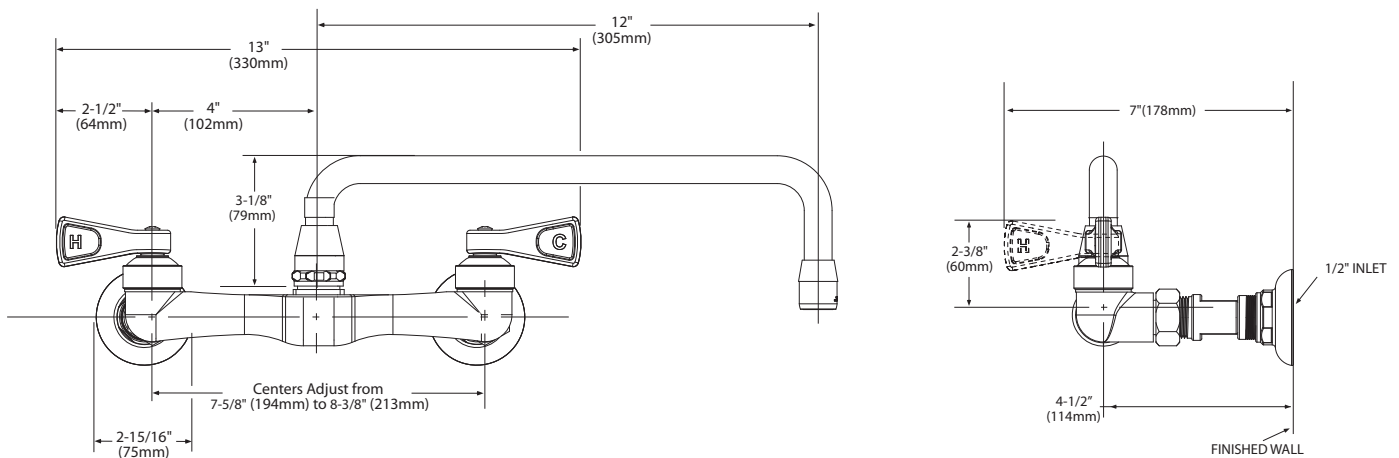
### WARRANTY

- Warranted for 5 years against material or manufacturing defects



**Two-Handle Wall Mount Faucet**

**Model: CA8119**  
*(for models after 3/2011)*



## CRITICAL DIMENSIONS

(DO NOT SCALE)

### FAUCET DESCRIPTION

- Chrome plated brass construction
- 1/2" IPS connections


### OPERATION

- 4" wrist blade handles with hot and cold color indicators and vandal resistant screws

### CARTRIDGE

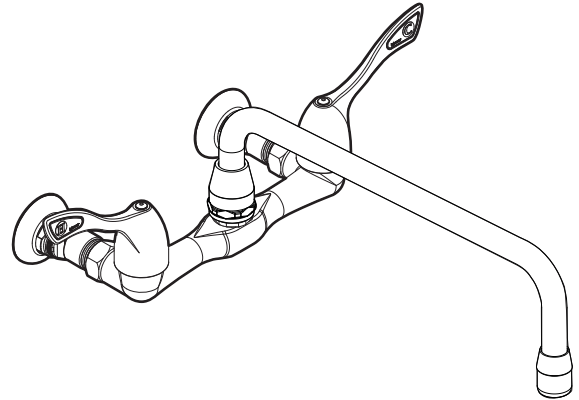
- Ceramic disc cartridge
- Nonmetallic and nonferrous material
- 1/4 turn operation

### STANDARDS

- Designed and manufactured to comply with the requirements of: ASME A112.18.1/CSA B-125.1 and all specifications referenced therein
- Contains no more than 0.25% weighted average lead content
- Certified to ANSI/NSF 61/9
- Complies with California Proposition 65 and the Federal Safe Drinking Water Act
- ADA  for lever handles

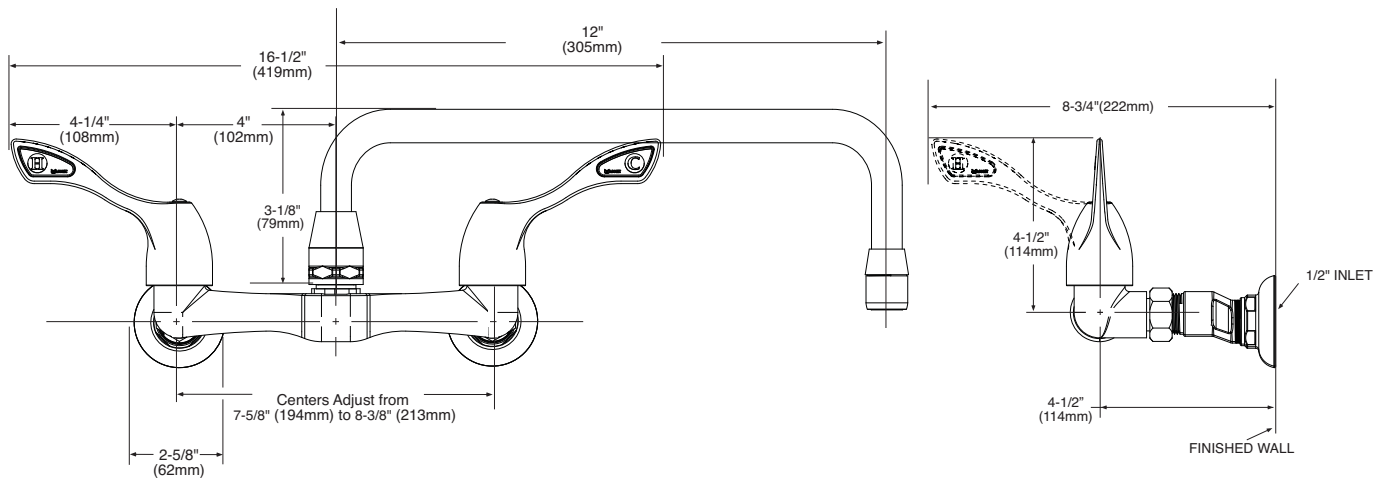
### WARRANTY

- Warranted for 5 years against material or manufacturing defects



**Two-Handle Wall Mount Faucet**

**Model: CA8119**



## CRITICAL DIMENSIONS

(DO NOT SCALE)