



Buy it for looks. Buy it for life.®

**DESCRIPTION**

- Chrome plated metal construction
- 1/2" connections: IPS - exterior, CC - interior
- Includes showerhead, arm and flange

**OPERATION**

- Dual control
- Acrylic knob style handles
- Volume and temperature controlled by rotating either handle counterclockwise to open and clockwise to close

**FLOW**

- Showerhead is limited to 2.0 gpm (7.6 L/min) maximum, 1.5 gpm (5.7 L/min) at 45 psi

**CARTRIDGE**

- 1224 cartridge design
- Nonmetallic and stainless steel materials

**STANDARDS**

- Third party certified to ASME A112.18.1/CSA B125.1 and all applicable requirements referenced therein
- Meets WaterSense® criteria
- Meets New York City Local Law No. 5

**WARRANTY**

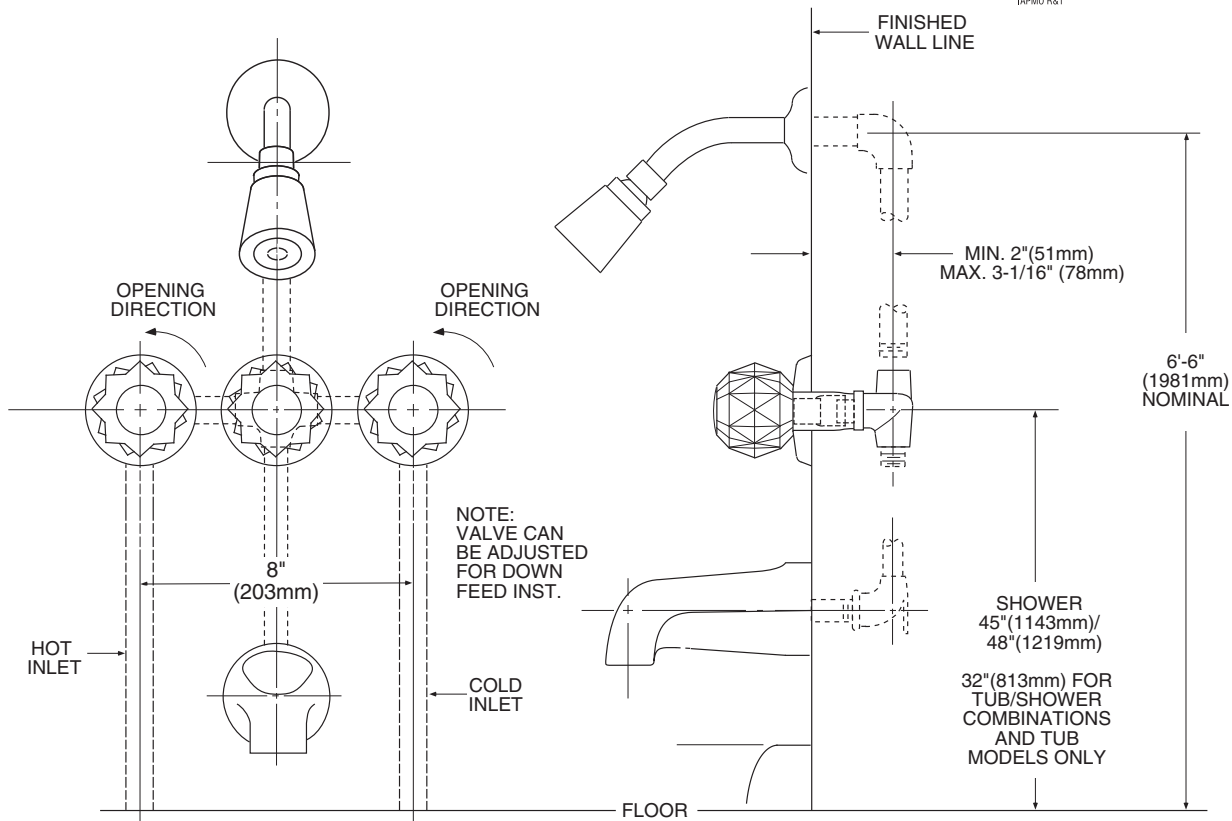
- Lifetime limited warranty against leaks, drips and finish defects to the original consumer purchaser
- 5 year warranty if used in commercial installations

# Specifications



## TOUCH CONTROL® Three-Handle Tub/Shower Valve Eco-Performance

Model: 83267EP



### CRITICAL DIMENSIONS

(DO NOT SCALE)