



Buy it for looks. Buy it for life.®

Specifications

DESCRIPTION

- Chrome plated metal construction
- 1/2" connections: IPS - exterior, CC - interior
- Includes showerhead, arm and flange

OPERATION

- Dual control
- Lever handles
- Volume and temperature controlled by rotating handles toward spout to open


FLOW

- Showerhead is limited to 2.0 gpm (7.6 L/min) max.

CARTRIDGE

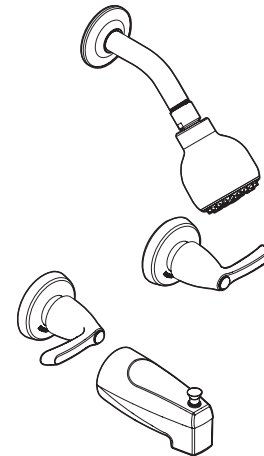
- 1224 cartridge design
- Nonmetallic and stainless steel materials

STANDARDS

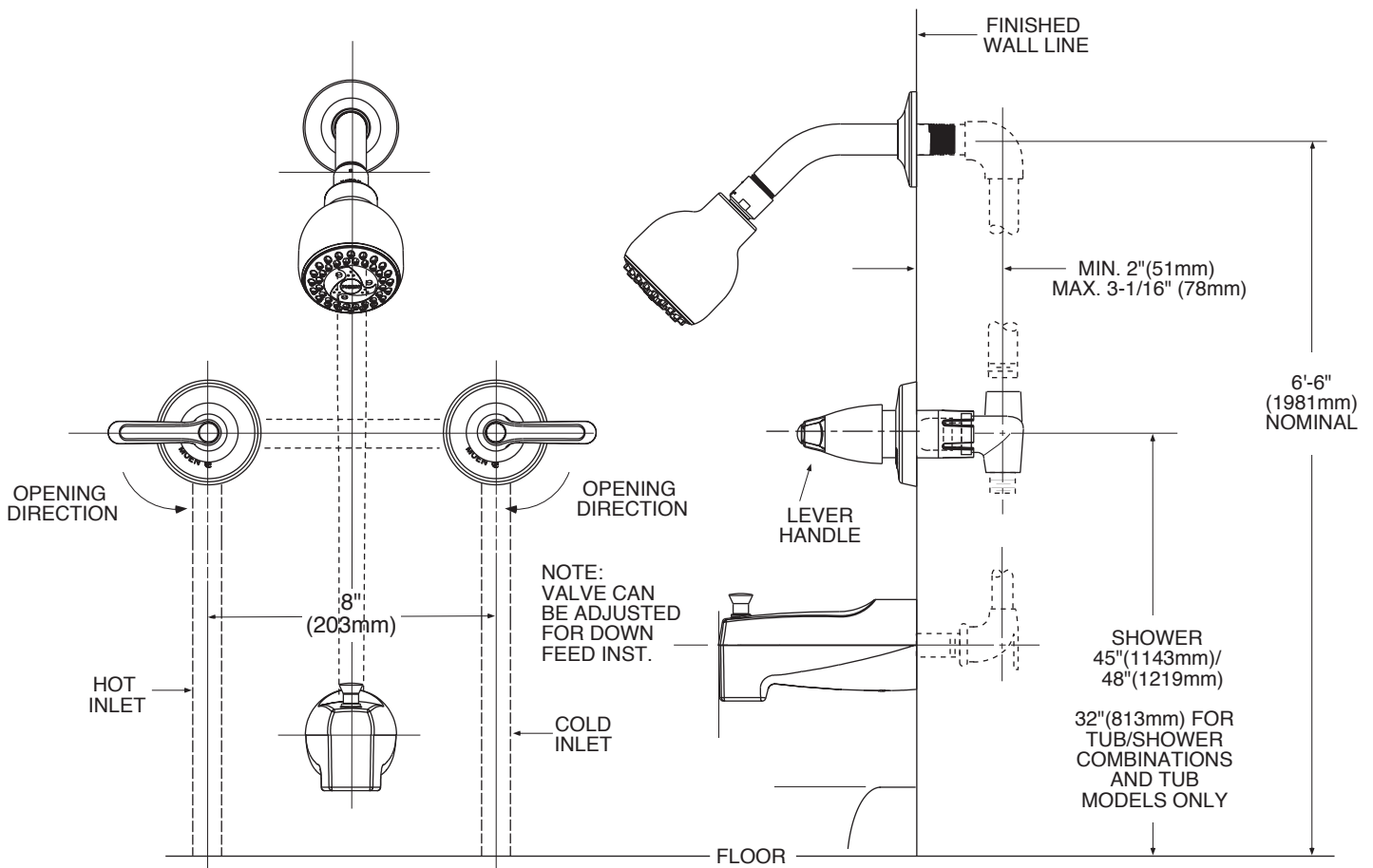
- Third party certified to ASME A112.18.1/CSA B125.1, and all applicable requirements referenced therein
- ADA  for lever handles
- Meets WaterSense® criteria
- Meets New York City Local Law No. 57

WARRANTY

- Lifetime limited warranty against leaks, drips and finish defects to the original consumer purchaser
- 5 year warranty if used in commercial installations



Adler™
Two-Handle Tub/Shower Valve
Model: 82555



CRITICAL DIMENSIONS

(DO NOT SCALE)