

## FAUCET DESCRIPTION



- Metal construction with a chrome plated or decorative glacier or sand finish
- Supplied with 9" spout
- 1/2" IPS adapters on 3/8" copper tube inlets
- Includes Protégé side spray in deck plate

## OPERATION



- Lever style handle
- Temperature controlled by 180° arc of handle travel
- Will operate with less than 5lbs. of force

## FLOW



- Aerator is limited to 2.2 gpm max (8.3 L/min)

## CARTRIDGE



- 1225 cartridge design
- Nonmetallic/nonferrous and stainless steel material
- Is capable of correcting reversed piping and can accommodate back to back installations

## STANDARDS

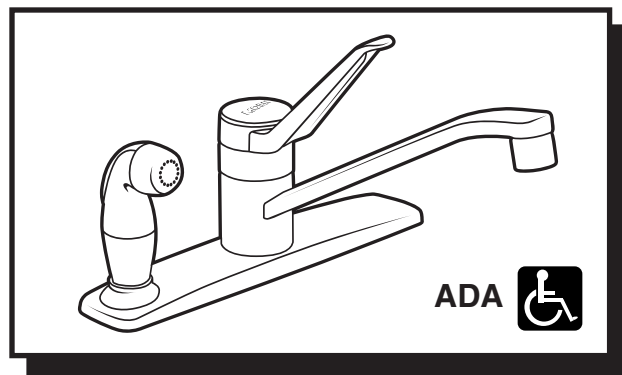


- The faucet is third party certified by CSA to meet the following: CSA B-125, ASME A112.18.1M and all applicable requirements referenced therein and complies with the applicable requirements of ANSI A117.1
- Certified to ANSI/NSF 61/9
- Complies with California Proposition 65 and with the Federal Safe Water Drinking Act

## WARRANTY



- Lifetime limited warranty against leaks, drips and finish defects to the original consumer purchaser
- 5 year warranty if used in commercial installations



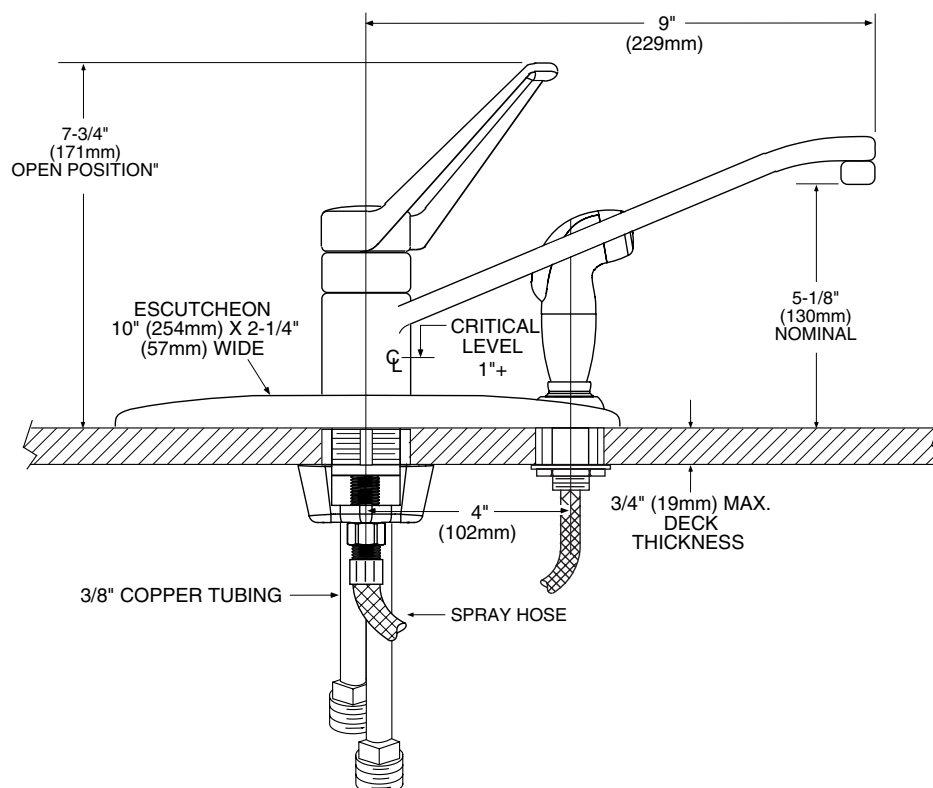
## LEGEND®

### Single-Handle Kitchen Faucet w/Protégé Side Spray in Deck Plate

**Models: 7231, 7231S,  
7231W, 67231**

**NOTE: See reverse side  
for illustrated parts**

**NOTE: DESIGNED TO INSTALL  
THRU 3 HOLES 1" (25mm) MIN. DIA.  
AND 4" (102mm) ON CENTER**



## CRITICAL DIMENSIONS

(DO NOT SCALE)

## FAUCET DESCRIPTION



- Metal construction with a chrome plated or decorative glacier or sand finish
- Supplied with 9" spout
- 1/2" IPS adapters on 3/8" copper tube inlets
- Includes Protégé side spray in deck plate

## OPERATION



- Lever style handle
- Temperature controlled by 180° arc of handle travel
- Will operate with less than 5lbs. of force

## FLOW



- Aerator is limited to 2.2 gpm max (8.3 L/min)

## CARTRIDGE



- 1225 cartridge design
- Nonmetallic/nonferrous and stainless steel material
- Is capable of correcting reversed piping and can accommodate back to back installations

## STANDARDS

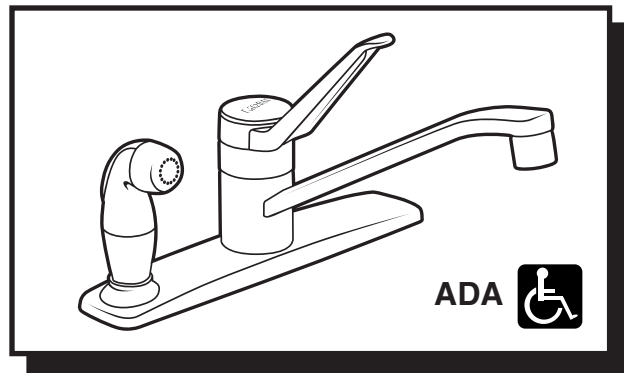


- The faucet is third party certified by CSA to meet the following: CSA B-125, ASME A112.18.1M and all applicable requirements referenced therein and complies with the applicable requirements of ANSI A117.1
- Certified to ANSI/NSF 61/9
- Complies with California Proposition 65 and with the Federal Safe Water Drinking Act

## WARRANTY



- Lifetime limited warranty against leaks, drips and finish defects to the original consumer purchaser
- 5 year warranty if used in commercial installations



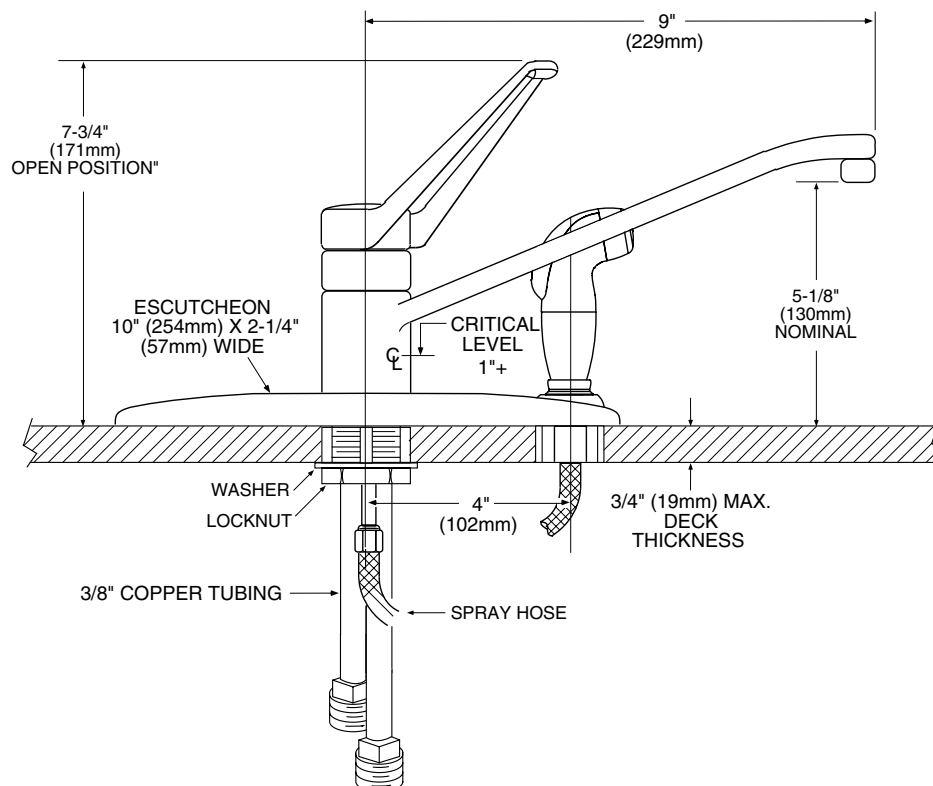
## LEGEND®

### Single-Handle Kitchen Faucet w/Protégé Side Spray in Deck Plate

**Models: 7231, 7231S,  
7231W, 67231**

**NOTE: See reverse side  
for illustrated parts**

**NOTE: DESIGNED TO INSTALL  
THRU 3 HOLES 1" (25mm) MIN. DIA.  
AND 4" (102mm) ON CENTER**



## CRITICAL DIMENSIONS

(DO NOT SCALE)