

# Colonial Technical Specification

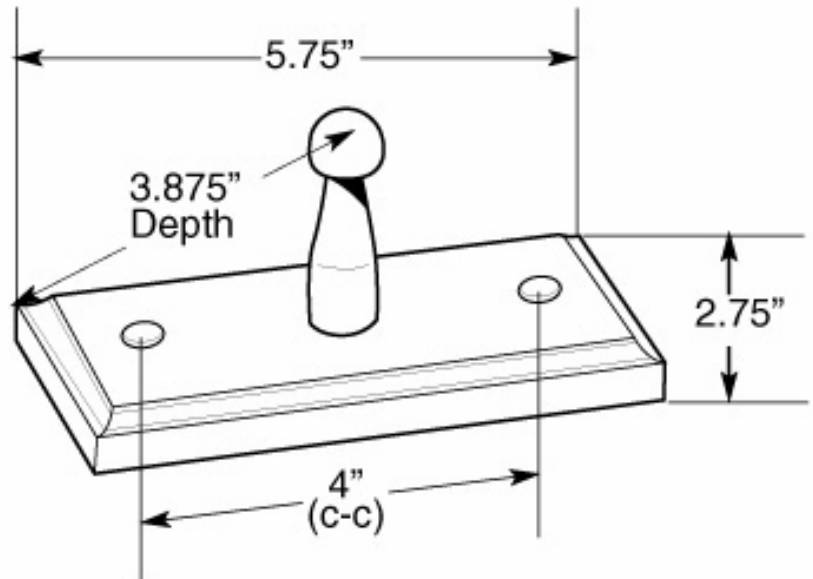
## Single Robe Hook

7102

### Stock Numbers:

- q **7102K – Single Robe Hook**  
Honey Oak Finish  
Concealed Screw Mounting

### Dimensions:



### Materials:

**Robe Hook** and finishing caps are cut from solid oak and stained in a light Honey Oak finish or painted white.

### Installation Instructions:

1. Position unit on wall in desired location
  2. Mark hole locations.
  3. Drill starter holes.
  4. Attach unit to wall using 1 1/4" screws (provided)
  5. Place wood end caps in screw holes for a finished look.
- Note: Wood blocking is preferable behind all wall surfaces.  
If wood blocking is not available, the following optional fasteners are suggested: Tile/Masonry – Plastic or Lead Anchors; Plaster/Drywall – Toggle Bolts.

### Cleaning Instructions:

To preserve the fine finish of this product, clean only with a soft damp cloth. Dry well. Do not use commercial or abrasive cleaners.

**Stock Number:** \_\_\_\_\_ Robe Hook  
By CSI Bath Furnishings