



Buy it for looks. Buy it for life.®

Specifications

DESCRIPTION

- Digital thermostatic valve design with 3/4" inlet push fit connections and 1/2" outlet push fit connections

OPERATION

- Temperature range adjustment from 60 degrees F to 120 degrees F (16 degrees C to 49 degrees C). Factory maximum setting is 115 degrees (46 degrees C)
- Ambient temperature range from 40 to 104 degrees F (4.4-40 degrees C)
- Must be used with T3420 or 295 series
- Valve must be installed in an area that has an access panel
- Electrical power supply requirements 240V/ 50-60Hz/ .8A or 120V/ 60Hz/ .8A

FLOW

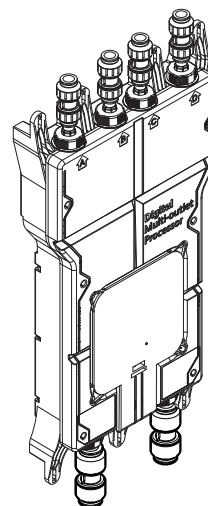
- Designed to deliver 17.5gpm (66 L/min) at 45 psi unrestricted flow. Min flow 2.4 gpm (9.1 L/min)
- Designed to deliver 6.0 gpm (22.7 L/min) at 45 psi (one outlet)

STANDARDS

- Third party certified to meet ASME A112.18.1/CSA B-125.1, CSA B125.3, ASSE 1016, ASSE 1070 and all applicable requirements referenced therein
- Third party certified to meet UL1951
- Third party certified to meet FCC part 15

WARRANTY

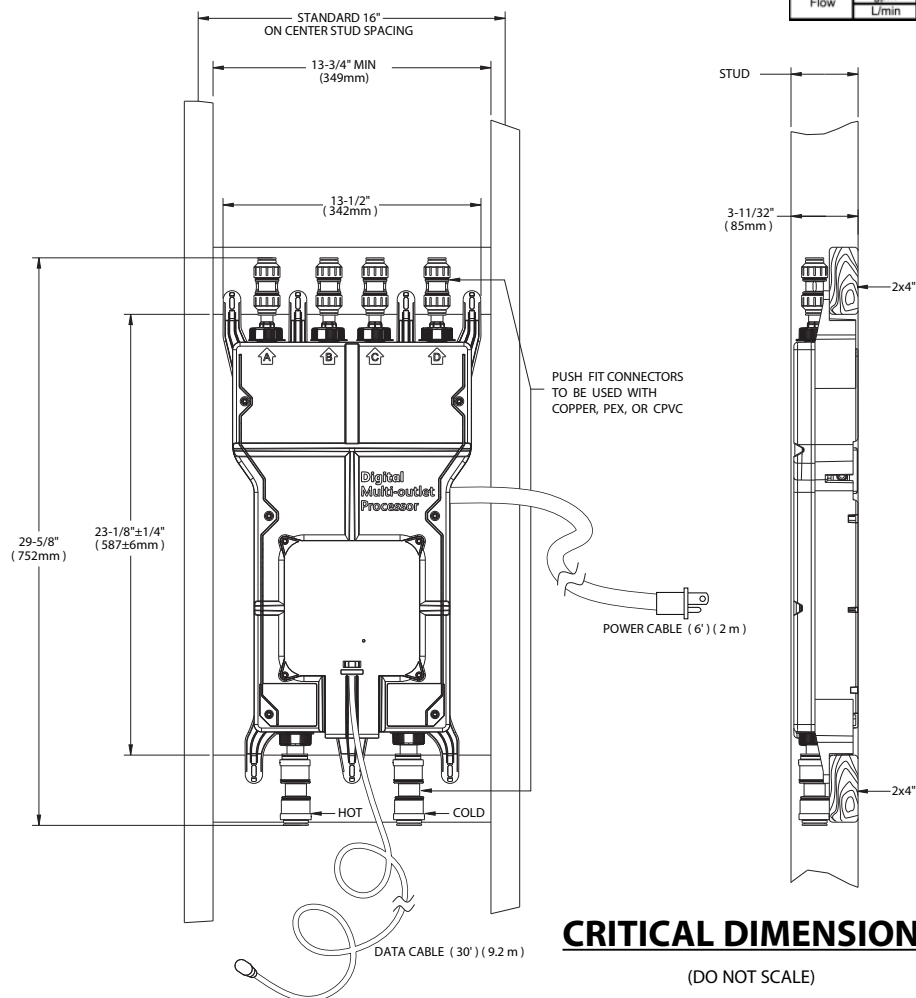
- 5 year warranty against leaks, drips and operation defects to the original consumer purchaser
- 1 year warranty if used in commercial installations



ioDIGITAL™ Thermostatic Shower Valve

Model: 3384

Pressure	psig kPa	Pressure Differential-psi (kPa) (one outlet)							
		5 34	10 69	20 138	30 207	45 310	60 413	80 551	100 689
Flow	gpm L/min	2.53 9.6	4.01 15.2	4.57 17.3	5.68 21.5	6.75 25.5	7.48 28.3	8.2 31.0	8.7 32.9



CRITICAL DIMENSIONS

(DO NOT SCALE)

