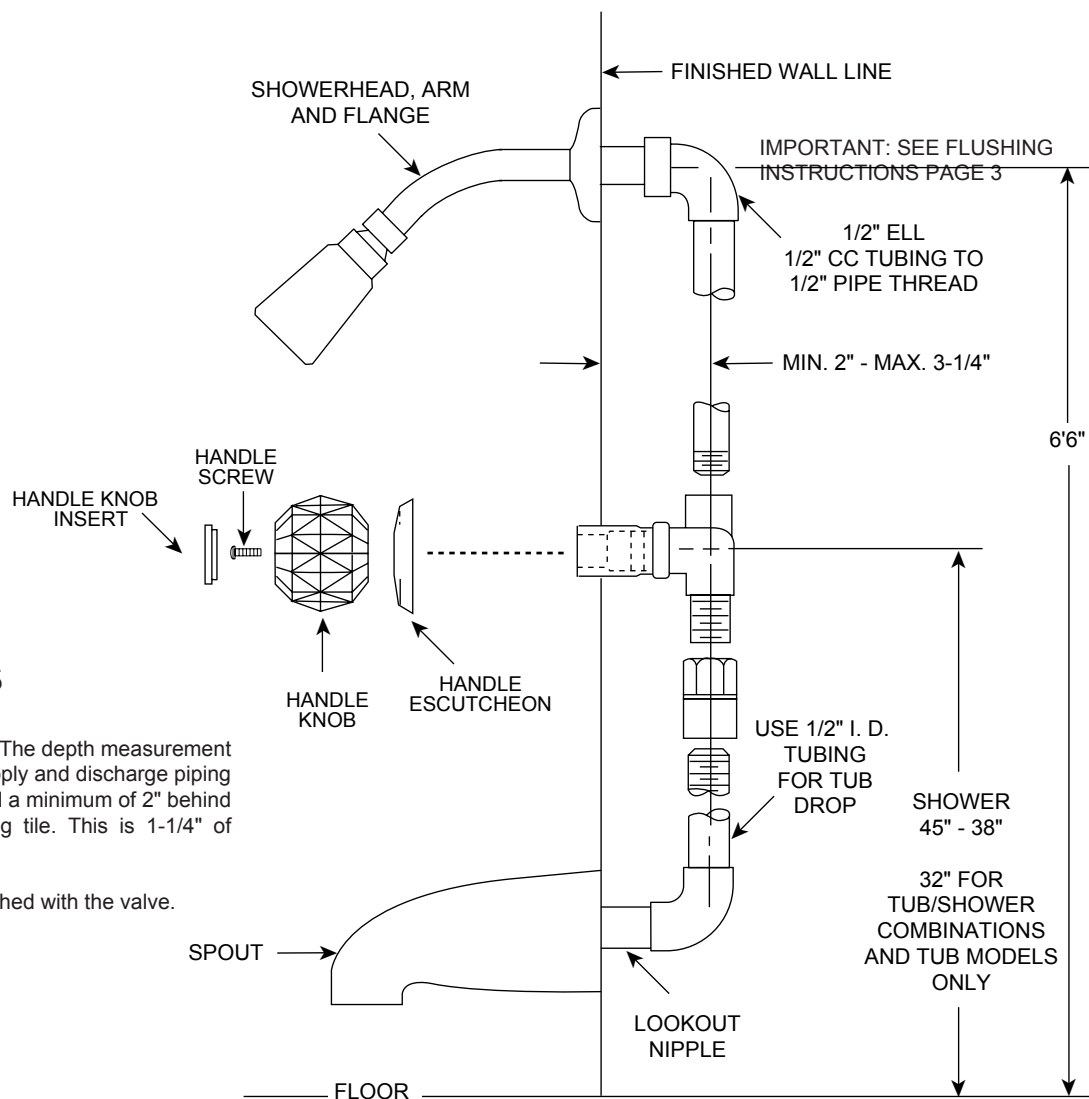




INSTALLATION INSTRUCTIONS

THESE INSTRUCTIONS MUST BE
LEFT WITH HOMEOWNER

THREE HANDLE TUB AND SHOWER VALVE



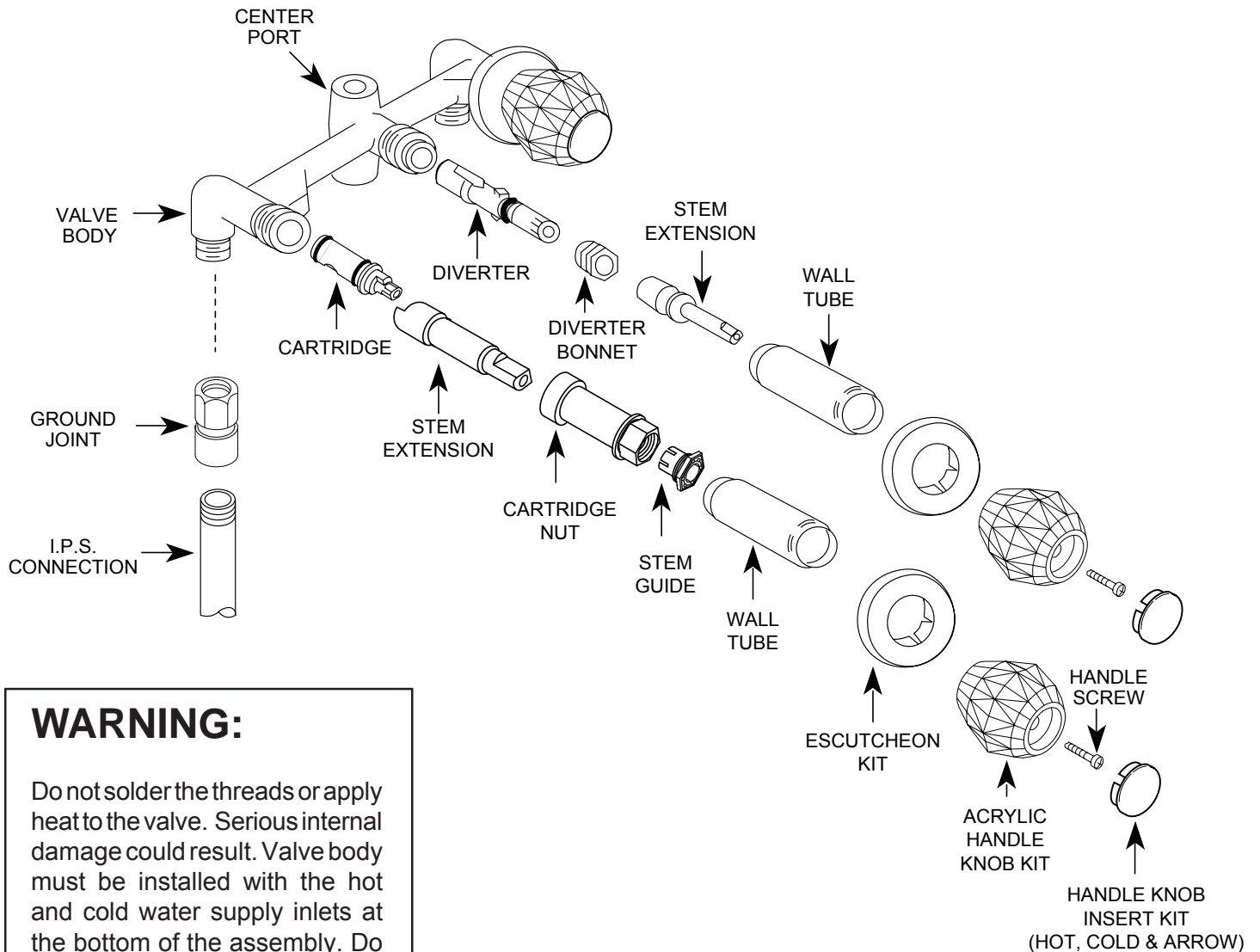
Measurements

These are shown on the drawings. The depth measurement is critical. The center line of the supply and discharge piping should be a maximum of 3-1/4" and a minimum of 2" behind the finished wall surface, including tile. This is 1-1/4" of adjustment.

Pipe, ells and nipples are not furnished with the valve.

CAUTION: Always turn water off before disassembling the valve. Open both valve handles to relieve water pressure and to insure that COMPLETE water shut-off has been accomplished.

Before turning water on during either rough-in or trim-out, make sure that cartridge retainer nuts are in place. The cartridges and retainer nuts were properly installed and tested before leaving the factory. Although it is unlikely, it is nevertheless possible that through the handling of the valve by any number of persons the retainer nuts may not be properly installed. This should be carefully checked at time of rough-in and trim-out. If the retainer nuts are not properly installed, water pressure could force the cartridge out of the casting. Personal injury or water damage to the premises could result.



WARNING:

Do not solder the threads or apply heat to the valve. Serious internal damage could result. Valve body must be installed with the hot and cold water supply inlets at the bottom of the assembly. Do not invert valve body to accommodate water lines being supplied from above.

Installation

Shut OFF BOTH hot and cold water supplies. Install ground joint on water supply pipes. Hex nut end should face towards valve connections. Use tape liberally on all pipe threads. Screw the union adapters onto the supply piping with the union nut in place. CAUTION: If there is a danger of the union nut slipping down the supply pipes beyond reach, tie rope or rags firmly around the pipes to keep the nut within reach if dropped.

Connect the valve to the supply lines by the union nut. The hot supply should be on the left, the cold supply on the right.

Connect the shower riser pipe to the top outlet and the tub drop pipe to the bottom outlet. Make all connections firm and tight. Block and secure all pipes to the inside wall.

Trim

MAKE SURE ALL WATER SUPPLIES ARE OFF.

SHOWER: Assemble shower arm flange to the long end of shower arm. Put tape on threads at both ends of shower arm. Screw shower arm into ell inside wall, **do not install showerhead at this time**. When a pipe lookout nipple is used, put tape on the pipe thread and screw the tub diverter spout into the lookout nipple. Use tape. Pull out while turning so as not to scratch the wall. If a final turn by a wrench is needed, use a small one with smooth jaws to grip spout end. **DO NOT** insert a tool into the spout end to turn. You could damage the spout.

Flushing

IMPORTANT: Before closing all wall openings, pressure test valve and complete system using flushing instructions.

Pipe chips, sand, stones and other solids found in new and renovated plumbing can damage the sealing surfaces of the cartridge and cause a leak. To avoid damage, **DO NOT TURN ON SUPPLY VALVES until instructed below**.

After installing and connecting your new faucet, be sure a tub spout and shower arm are installed, open both hot and cold cartridges. Turn on both hot and cold water supply valves and allow the water to run from tub spout for 15 seconds. Pull up on the diverter knob on the tub spout and run water through the shower riser for 15 seconds. Turn off the hot and cold cartridges, install the showerhead. Check the system for leaks.

Disassembly (Cartridge)

CAUTION: Turn off BOTH water supplies and open BOTH faucet handles to alleviate water pressure and insure that COMPLETE water shutoff has been accomplished.

Pry off handle knob insert. Remove handle screw, handle knob and escutcheon and then unscrew wall tube. Loosen the cartridge nut with an adjustable wrench and remove it and the stem guide as a unit together with the stem extension. Grasp the cartridge stem with pliers and pull it **STRAIGHT** out of the housing.

Disassembly (Diverter)

Pry off handle knob insert and remove the handle screw with screwdriver. Then pull off handle knob, stem extension, escutcheon and wall tube. Remove the diverter bonnet with an open end socket wrench. Placing pliers on the diverter stem, pull the diverter out of the faucet body.

Reassembly (Cartridge)

CAUTION: Failure to follow these instructions might cause the cartridge to be damaged beyond repair.

Before inserting the cartridge, turn the stem to the **ON** position, waterway holes in the cartridge lined up. Insert the cartridge **STRAIGHT** into the housing making sure that the lug on the cartridge is engaged in the notch in the valve body. Place the stem extension over the cartridge stem, and replace the cartridge nut and stem guide. **START BY HAND, BUT DO NOT CROSS THREAD**, tighten the nut and stem guide firmly with an adjustable wrench. Screw on the wall tube, replace escutcheon and handle parts.

Reassembly (Diverter)

Push the diverter stem straight into the valve body and carefully screw down the diverter bonnet by hand. **DO NOT CROSS THREADS**. When hand tight, continue tightening with an open end socket wrench. Push the wall tube onto the valve body then replace the escutcheon. Insert and rotate the stem extension until it drops into position. Place the handle knob on the stem extension and rotate until it drops into position. Replace the handle screw, tighten securely and press the handle cover in place.

Cleaning and Care Instructions for Special Finish Models

All that is necessary to clean these faucets is to wipe them with a soft damp cloth such as terrycloth. Warm water will remove dry water spots. **CAUTION: DO NOT** use cleansers which contain abrasives or harsh chemicals. **NEVER** use alcohol or other organic solvents. A high quality, non-abrasive wax polish applied occasionally, will help to preserve the deep tones of the finish.

HELPLINE: Call our toll free Helpline number,



**(800) BUY-MOEN
(289-6636)**

for answers to any product, installation, replacement parts, or warranty questions.

