



INSTALLATION INSTRUCTIONS

THESE INSTRUCTIONS MUST BE
LEFT WITH HOME OWNER

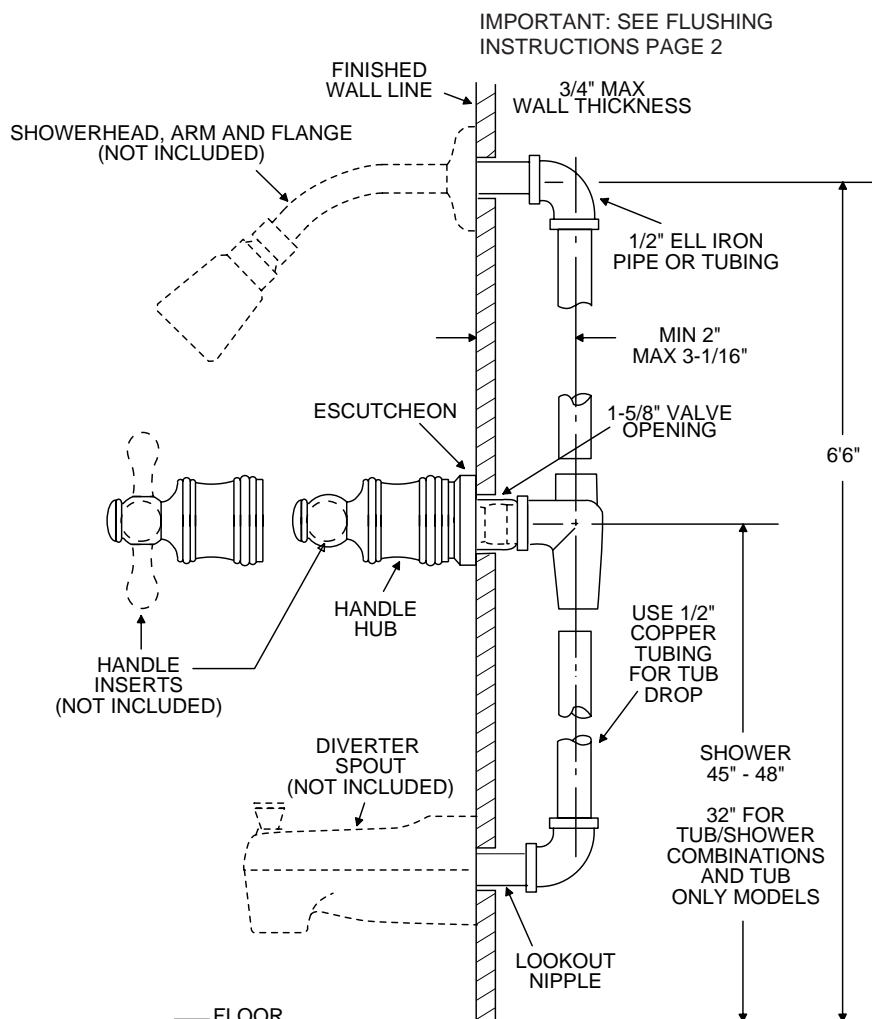
LEVER & CROSS TWO-HANDLE TUB/SHOWER VALVE

WARNING:

Do not solder the threads or apply heat to the valve. Serious internal damage could result.

MEASUREMENTS: These are shown in the drawings. The depth measurement is critical. The center line of the supply and discharge piping should be a maximum of 3-1/16" and a minimum of 2" behind the finished wall surface, including tile. This is 1-1/16" of adjustment. It is suggested that for best appearance of the handles on the finished valve, the rough-in should be made near the maximum limit.

Pipe, ells and nipples are not furnished with the valve.



CAUTION: Always turn water OFF before disassembling the faucet. Open both faucet handles to relieve water pressure to insure that COMPLETE water shut-off has been accomplished.

Before turning water on during either rough-in or trim-out, make sure the cartridge retainer nuts are in place. The cartridge and cartridge retainer nuts were properly installed and tested before leaving the factory. Although it is unlikely, it is nevertheless possible that through the handling of the faucet by any number of persons the cartridge retainer nuts may not be properly installed. This should be carefully checked at time of rough-in and trim-out. If the cartridge retainer nuts are not properly installed, water pressure could force the cartridge out of the faucet body. Personal injury or water damage to the premises could result.

For Connecting Supply Lines:

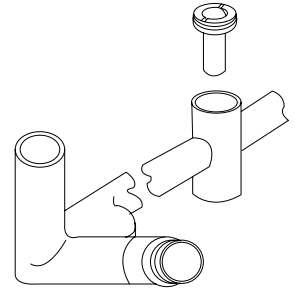
Solder the supply lines to the valve body supply ports.

CAUTION: Applying excessive heat to the valve body may damage the cartridge.

Flow Director Instructions:

Flow director is set-up for piping from floor to ceiling. For water supply lines, **plumbed ceiling to floor**, please follow these instructions.

1. Use a large flat blade screwdriver and remove the flow director located in the center port as illustrated.
2. Hold the valve with the supply ports in the up position (pointing toward ceiling). Re-install the flow director in the center port.



Flushing:

IMPORTANT: Before closing all wall openings, pressure test valve and complete system using flushing instructions.

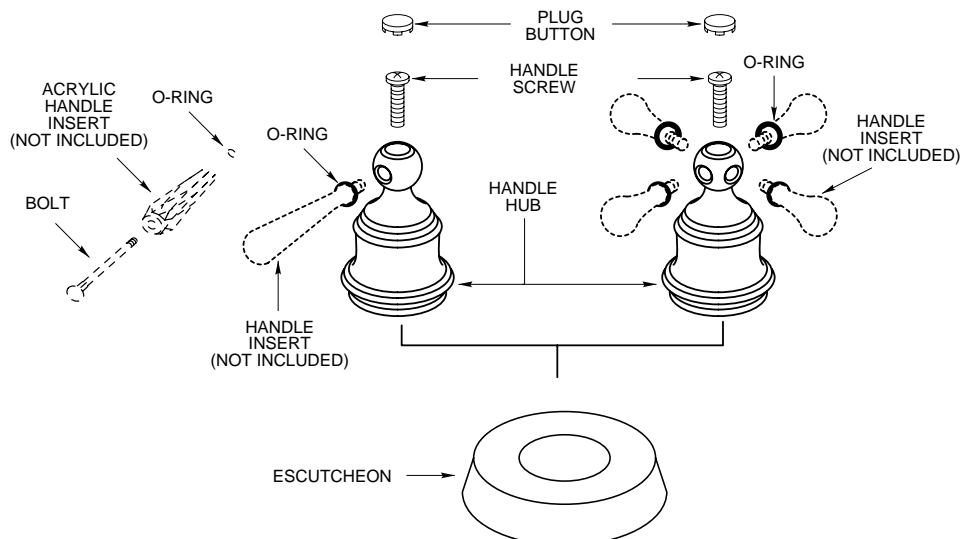
IMPORTANT:

Pipe chips, sand, stones and other solids found in new and renovated plumbing can damage the sealing surfaces of the cartridge and cause a leak. To avoid damage, DO NOT TURN ON SUPPLY VALVES until instructed below:

1. After installing and connecting your new faucet, be sure a tube spout and shower arm are installed, open both hot and cold cartridges.
2. Turn on both hot and cold water supply valves and allow the water to run from tub spout for 15 seconds.
3. Pull up on the diverter knob on the tub spout and run water through the shower riser for 15 seconds.
4. Turn off the hot and cold cartridges, install the showerhead.
5. Check the system for leaks.

To Install Handle Insert:

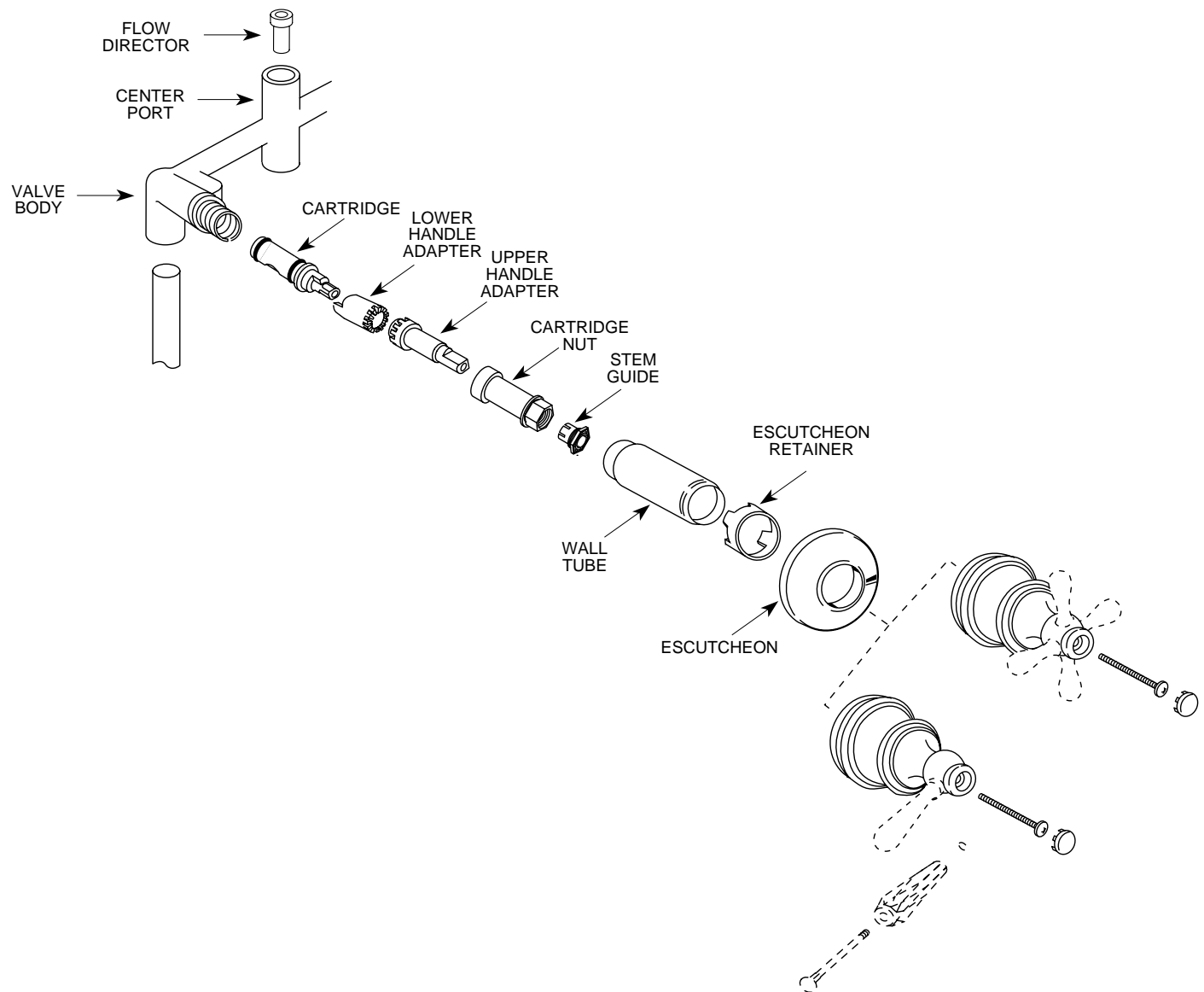
Be sure O-ring is in place on insert, as shown. Thread insert into handle hub. Insert handle screw and tighten securely. Replace plug button.



Reassembly:

TO INSTALL LEVER & CROSS HANDLES:

Place the handle hubs onto the upper handle adapters, do not install handle screws. Rotate hot handle clockwise and cold handle counterclockwise until they stop in the OFF position. If it is necessary to adjust handle orientation note handle position. Remove handle, pull out on the upper handle adapter, replace the handle and turn to the desired position. Push in on handle to reengage with lower handle adapter. Install the wall tube, escutcheon retainer and escutcheon. Replace handles and install handle screws and tighten securely, then install plug buttons.



HELPLINE: Call our toll free Helpline number,



**(800) BUY-MOEN
(289-6636)**

for answers to any product, installation, replacement parts, or warranty questions.

