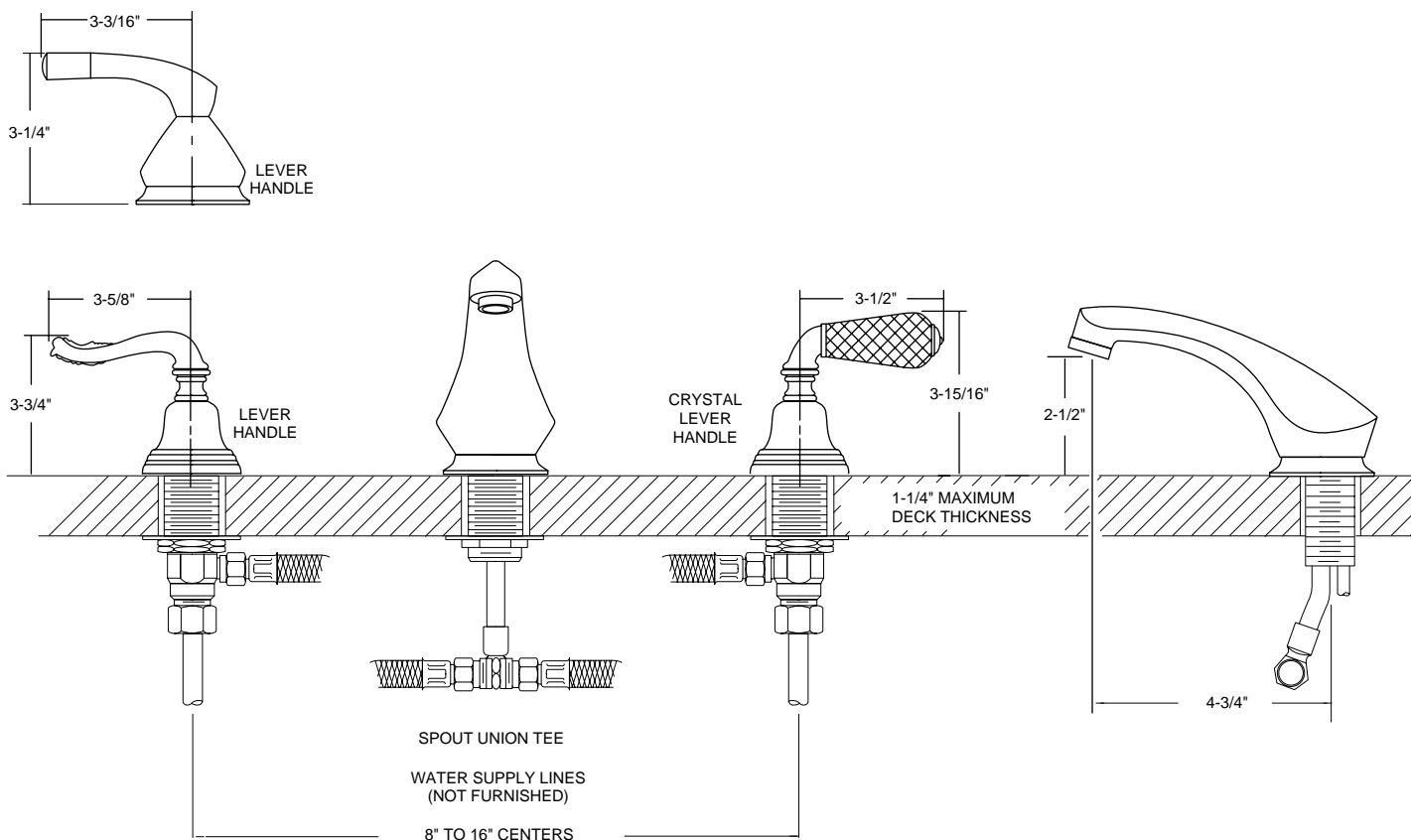




INSTALLATION INSTRUCTIONS

THESE INSTRUCTIONS MUST BE
LEFT WITH HOMEOWNER

WIDESPREAD LAVATORY MODELS



Complies with ASME A112.18.1M and CSA B125

SPOUT INSTALLS THROUGH 1" MIN. DIAMETER HOLE.
VALVE INSTALLS THROUGH 1-1/8" MIN. DIAMETER HOLE.

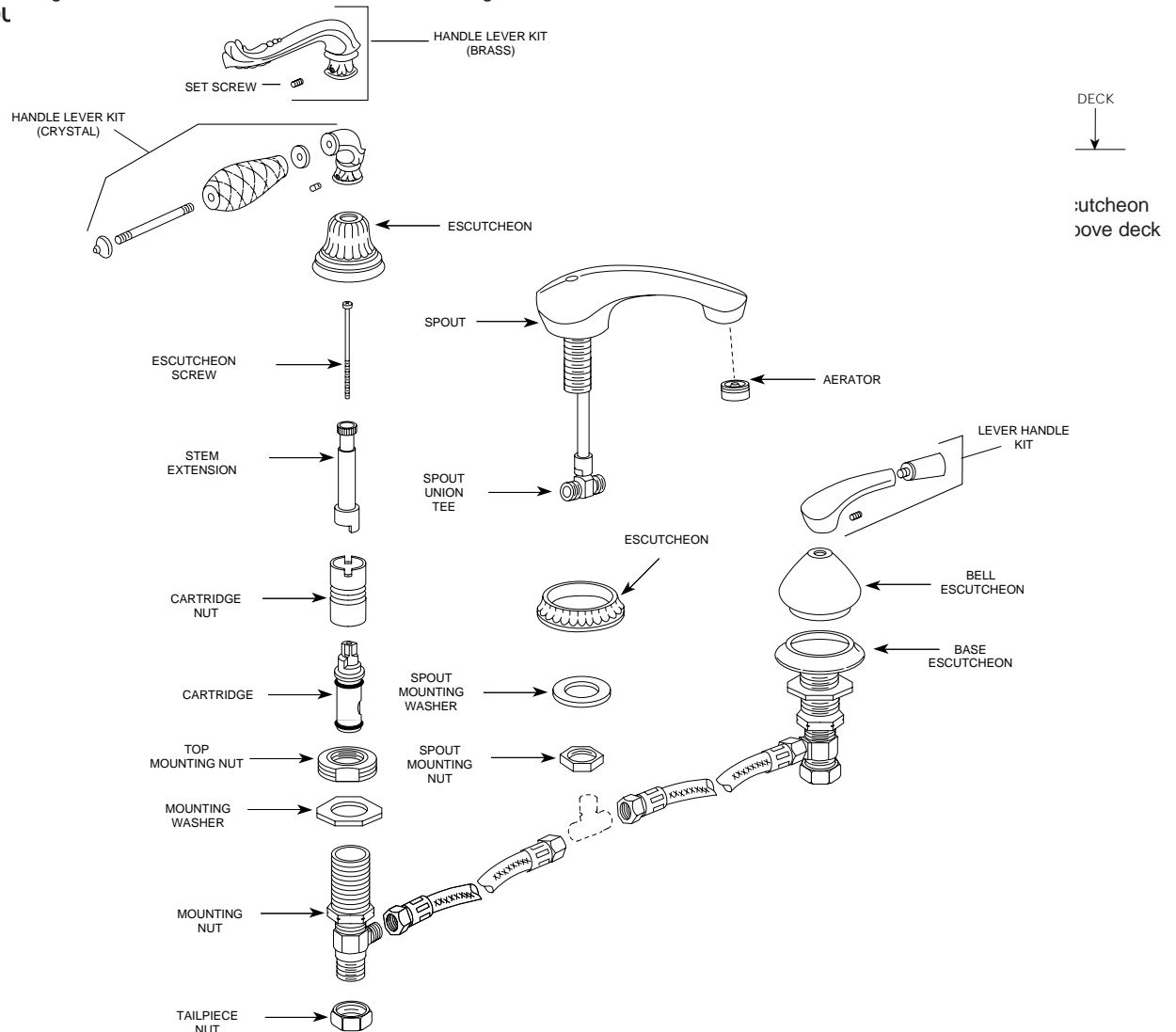
CAUTION: Always turn water OFF before disassembling the faucet. Open faucet handles to alleviate water pressure to insure that COMPLETE water shut-off has been accomplished.

Before turning water on during either rough-in or trim-out, make sure the cartridge retainer nuts are in place. The cartridge and cartridge retainer nuts were properly installed and tested before leaving the factory. Although it is unlikely, it is nevertheless possible that through the handling of the faucet by any number of persons the cartridge retainer nuts may not be properly installed. This should be carefully checked at time of rough-in and trim-out. If the cartridge retainer nuts are not properly installed, water pressure could force the cartridge out of the faucet body. Personal injury or water damage to the premises could result.

Installation Instructions

1. Fill the recess under the spout and handle escutcheons with plumber's putty (not furnished). Place spout with spout escutcheon and spout adapter in place down through the center hole. Put spout mounting washer over spout shank. Screw on the spout mounting nut and make hand-tight.
 2. Turn bottom mounting nuts on valve bodies all the way down, for basin clearance, and drop on mounting washers. With the valve bodies and supply tubing assembled under the sink, slide the bodies up through the holes. Screw top mounting nuts down until top of valve bodies are 3/8" to 7/16" from top of deck (see illustration below).
 3. Screw the handle escutcheons onto valve bodies and hand-tighten them until they bottom out. Screw the bottom mounting nuts and mounting washers up against the bottom of the basin and hand-tighten. Hold the valve bodies from turning by using another wrench on valve body flats. Install supply tubing to spout union tee.
 4. Test the lift rod to make sure it operates freely. **NOTE:** If lift rod binds against spout union tee, carefully bend spout tube slightly outward (as illustrated in Waste Assembly installation instructions on back page) to clear lift rod. (Do not twist spout union tee).
 5. **FOR TRADITIONAL ACRYLIC, LEVER OR CROSS HANDLE:** Install handle hub onto handle adapter. Install handle screw and tighten. Repeat with the other handle hub. Turn handle hub to the RIGHT (clockwise) to "OFF" to properly position handle hub inserts and screw them into place. Make final tightening of all mounting nuts from below with a basin wrench. Hold the valve bodies from turning by using another wrench on valve body flats. Screw handle inserts (not included) into handle hubs. Place handle hubs onto handle adapters. Install handle screws and tighten. **FOR HOT SIDE:** rotate handle clockwise until it stops, the valve is off in this position. Loosen the handle screw two or three full turns and rotate clockwise to desired off position. Re-tighten the handle screw. **FOR COLD SIDE:** repeat the above steps, turning in the counterclockwise direction. Install plug buttons into tops of handle hubs.
 6. **FOR CONCENTRIX INSERT HANDLE:** Install insert handle adapter onto upper handle adapter. Install handle screw, tighten. Place skirt over insert handle adapter. Install handle insert (not supplied) making sure notch on bottom of insert engages notch on insert handle adapter, place gasket up under recess of handle cap and screw cap into place. Repeat with the other side. Make final tightening of all mounting nuts from below with basin wrench. Hold valve bodies from turning by using another wrench on valve body flats.
- Install water supplies onto the valve body using the tailpiece nuts supplied. Hold the body by the wrench flats. Make this joint wrench tight. Installation is now complete. Check system for leaks. See back page for Waste Assembly installation instructions.

IF HANDLE ROTATION IS REVERSED: **TURN OFF WATER SUPPLIES AND OPEN HANDLES TO ALLEVIATE PRESSURE.** Remove handle, cartridge nut and upper handle adapter. Lift lower handle adapter and turn 180°, then reset on top of cartridge stem. Reinstall all components, making sure the cartridge nuts from both sides are secure before turning water on, **CAUTION: BE SURE NOT TO CROSS THREAD CARTRIDGE NUTS**



Flushing Instructions

IMPORTANT: Pipe chips, sand, stones, and other solid objects found in new and renovated plumbing can damage the sealing surface of the faucet cartridge and cause a leak. To avoid damage, DO NOT OPERATE VALVE until you have followed these instructions.

1. After installing and connecting your new faucet, turn on both supply valves and look for any leaks.
2. At the valve turn on both hot and cold water and allow the water to run for 15 seconds.
3. Turn off the water, unscrew the aerator from the end of spout and clean any debris from the cone screen.
4. Replace the aerator.

Disassembly

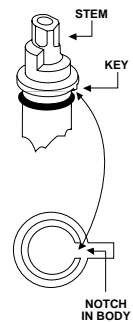
CAUTION: Turn OFF BOTH water supplies and open BOTH faucet handles to alleviate water pressure to insure that COMPLETE water shut-off has been accomplished.

1. Remove handle cap or plug button (For Concentrix handle models unscrew handle cap) handle screw, handle and cartridge nut.
2. Set aside the cartridge nut, and with handle adapter installed, reassemble handle and handle screw and tighten.
3. Grasp handle hub in the middle and pull cartridge STRAIGHT UP and out of valve body.

Reassembly

CAUTION: Failure to follow these instructions can cause personal injury or water damage to the premises, or could result in a faulty installation or damage the new cartridge.

1. With cartridge nut removed, assemble the handle adapter and handle hub to the new cartridge and tighten the handle screw. This will aid in locating the cartridge properly in the valve body. Turn the cartridge stem so the hole in the piston is lined up with the hole in the shell.
2. Drop the cartridge into the valve body and press down.
3. Now press down firmly while rotating handle counterclockwise. This will align the "KEY" on the cartridge with the "NOTCH" in the valve body. When the key enters the notch you will feel it drop in and the cartridge will be in place. To be certain, rotate the handle clockwise and then counterclockwise with gentle force. You should feel the handle stop in both directions. If so, the cartridge is in place. **Do not turn the water on yet.**
4. Unscrew handle screw, remove handle hub in order to replace the cartridge nut, be sure O-ring is inside cartridge nut. Replace cartridge nut and tighten firmly. Repeat for the other side. **CAUTION:** Be sure not to cross thread cartridge nuts during installation.
5. Replace handle parts (follow illustration on previous page) . You are now ready to turn the water on.

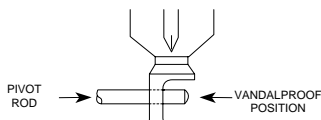


FOR LOCATING CARTRIDGE PROPERLY

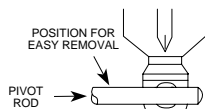
Lavatory Lift Rod and Waste Assembly

1. Thoroughly clean around drain opening in lavatory sink. Apply 1/4 inch bead of plumber's putty (not furnished) around the bottom side of drain seat (as shown).
2. Apply pipe joint compound (not furnished) to top threaded end of the drain body. Slip drain body up through the drain opening and screw seat onto the drain body.
3. Position the drain body (with pivot rod opening extending rearward) and tighten mounting nut until the drain body is snug. Wipe excess plumber's putty from the drain seat area. Apply pipe joint compound (not furnished) to top threaded end of tailpipe and screw into drain body. Tighten firmly by hand.
4. Position drain plug in either of the following ways:
 - A. VANDALPROOF - This design is to prevent unauthorized removal of the drain plug. Unscrew the pivot nut and remove the pivot rod. Inside the drain body position the pivot rod through the drain plug hole as shown in the illustration below. Screw the pivot nut back on the drain body. **DO NOT OVERTIGHTEN.**
 - B. EASY REMOVAL - This design is for quick removal of drain plug for cleaning. Just drop in the drain plug as shown in the illustration below.

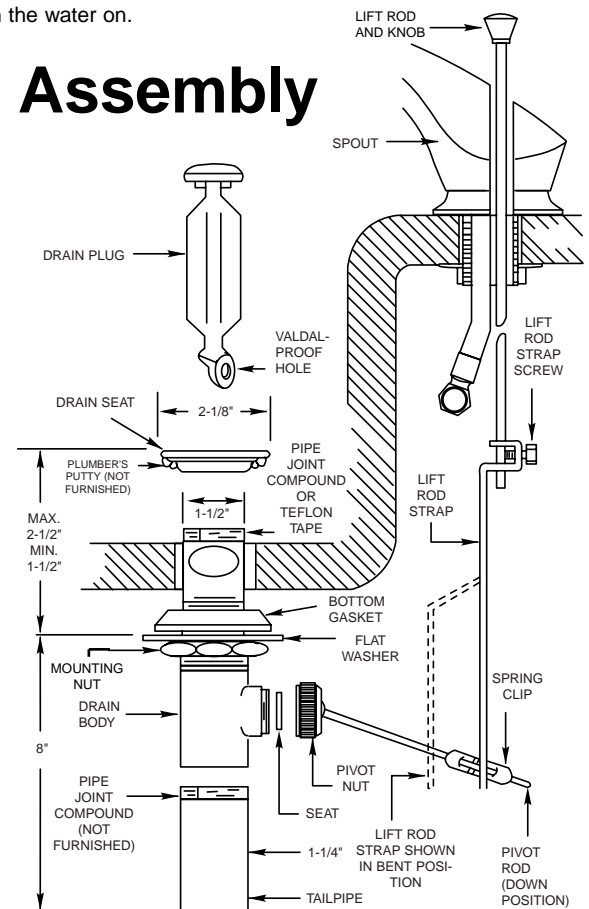
A. VANDALPROOF



B. EASY REMOVAL



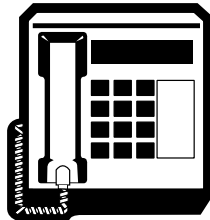
5. Install lift rod, with knob attached, into top of spout as shown. Secure lift rod strap to bottom end of lift rod as shown. With pivot rod in the down position, assemble strap to pivot rod using the spring clip. The strap will have to be bent to reach the pivot rod on some installations. Adjustment may be required so lift rod clears spout tube and connection.
6. With the drain plug in full open position, adjust lift rod and knob to clear faucet and tighten lift rod strap screw.



Consumer Information

Faucets made of leaded brass alloys may contribute small amounts of lead to water that is allowed to stand in contact with the brass. The amount of lead contributed by any faucet is highest when the faucet is new. The following steps may reduce potential exposure to lead from faucets and other parts of the plumbing system:

- Always run the water for a few seconds prior to use for drinking or cooking.
- Use only cold water for drinking or cooking.
- If you wish to flush the entire plumbing system of water that has been standing in the pipes or other fittings, run the cold water until the temperature of the water drops, indicating water coming from the outside main.
- If you are concerned about lead in your water, have your water tested by a certified laboratory in your area.



HELPLINE:

For answers to any product, installation, replacement parts or warranty questions, call our consumer helplines.

In the U.S., toll free:

1-800-321-6636

In Canada call:

Toronto, 905-829-3400

Rest of Canada, 1-800-465-6130



Moen Incorporated 25300 Al Moen Drive, North Olmsted, OH 44070-8022, U.S.A.

In Canada:

Moen Inc. 2816 Bristol Circle, Oakville, Ontario L6H5S7

© Copyright, 1995
Moen Incorporated
Printed in U.S.A.