

-
- This diagram shows the exploded view of the motor assembly. It includes the motor unit, the fan, and the mounting bracket. The motor unit is shown with its internal components, including the fan and the mounting bracket. The fan is shown with its blades and the mounting bracket. The mounting bracket is shown with its mounting holes and the mounting screws.

Cartridge Nut
200762

Backing Plate
200769

Snap Ring
200772

Set Screw(Requires 3/32" Hex Key)X2
40057

Sleeve	
200776	Chrome
200776BN	Brushed Nickel
200776NL	Polished Nickel
200776ORB	Oil Rubbed Bronze

Screw Kit
200765 /

Escutcheon Kit	
200812	Chrome
200812BN	Brushed Nickel
200812NL	Polished Nickel
200812ORB	Oil Rubbed Bronze

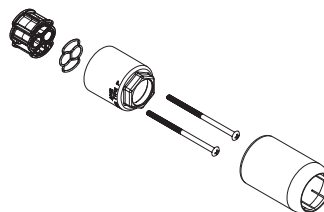
Handle Adapter Kit
200713

Transfer Handle Kit	
200734	Chrome
200734BN	Brushed Nickel
200734NL	Polished Nickel
200734ORB	Oil Rubbed Bronze

Control Handle Kit	
200788	Chrome
200788BN	Brushed Nickel
200788NL	Polished Nickel
200788ORB	Oil Rubbed Bronze

WYNFORD™
M-CORE™ 3-Series Valve Trim
with Integrated Transfer Valve

<u>MODEL</u>	<u>FINISH</u>
UT5500	Chrome
UT5500BN	Brushed Nickel
UT5500NL	Polished Nickel
UT5500ORB	Oil Rubbed Bronze



Optional 1" Handle Extension Kit

<u>Model</u>	<u>Finish</u>
200779	Chrome
200779BN	Brushed Nickel
200779NL	Polished Nickel
200779ORB	Oil Rubbed Bronze

Diverter Handle Extension Kit:

<u>Model</u>	<u>Finish</u>
200760	All Finishes



M•PACT™ System