


■ Order by Part Number


Stopper - Polished Stainless
1011



Removable Splash Guard
205497



Sink Flange
193900



Mounting Assembly Kit - 1824

Fiber Gasket

Backup Flange

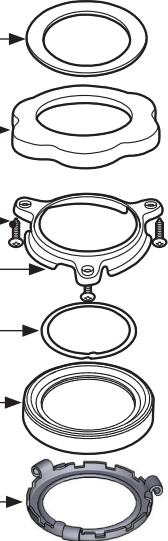
Screws (x3)

Mounting Ring

Snap Ring

Cushion Mount

Lower Mounting Ring

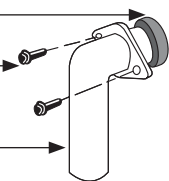


Drain Elbow Kit - 1026

Rubber Gasket

Screws

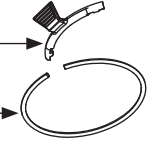
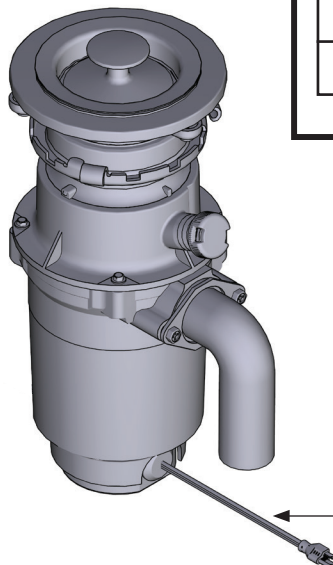
Drain Elbow



Simple Snap Assembly Kit - 193800

Simple Snap Tool

Snap Ring

Optional:


Dishwasher Connector Kit
1023



Unjamming Wrench
1037



Replacement Power Cord Kit
1024



Garbage Disposals

MODELS GT33c
GT50c

Other Available Accessories



Air Switch Remote Controller

- Installs into existing sink hole (ranging from 1-1/4" to 1-3/8") to operate disposer with plunger air switch.
- Perfect application for island countertops or where electrical switch is unavailable.
- No wiring connections or code restrictions.

Air Switch Base Unit

Air Switch Remote Controller	ARC-4200
------------------------------	----------

Additional Air Switch Button Finish Options:

Chrome	AS-4201-CH
Satin Nickel	AS-4201-SN
Mediterranean Bronze	AS-4201-BRB
Matte Black	AS-4201-BL
Brushed Gold	AS-4201-BG
Polished Nickel	AS-4201-NL
Black Stainless	AS-4201-BLS
Spot Resistant Stainless	AS-4201-SRS