

■ Order by Part Number

Stopper - Plastic
186589



Removable Splash Guard
205497



Sink Flange
193900



Mounting Assembly Kit - 1824

Fiber Gasket



Backup Flange



Screws (x3)



Mounting Ring



Snap Ring



Cushion Mount



Lower Mounting Ring

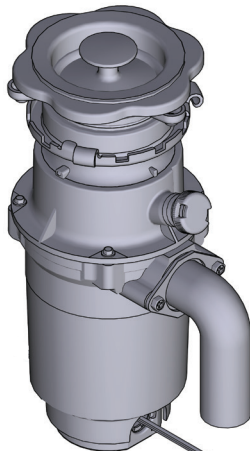
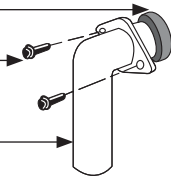


Drain Elbow Kit - 1026

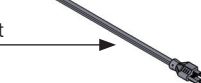
Rubber Gasket

Screws

Drain Elbow



Replacement Power Cord Kit
1024



Garbage Disposals

MODELS: GXP33c
GXP50c

Optional: Unjamming Wrench 1037

Other Available Accessories



Air Switch Remote Controller

- Installs into existing sink hole (ranging from 1-1/4" to 1-3/8") to operate disposer with plunger air switch.
- Perfect application for island countertops or where electrical switch is unavailable.
- No wiring connections or code restrictions.

Air Switch Base Unit

Air Switch Remote Controller	ARC-4200
------------------------------	----------

Additional Air Switch Button Finish Options:

Chrome	AS-4201-CH
Satin Nickel	AS-4201-SN
Mediterranean Bronze	AS-4201-BRB
White	AS-4201-WH
Almond	AS-4201-AL
Biscuit	AS-4201-BIS

Optional:

Dishwasher Connector Kit
1023



Unjamming Wrench
1037

