



Buy it for looks. Buy it for life.®



Designed for Living  
Bath Accessories 2015



Just a few of the reasons you'll love living and working with Moen® products.

**Never Trendy; Always Fashionable; Thoroughly Modern**

From urban loft looks to Euro-inspired styles, Moen knows modern. You'll discover a variety of products designed with bold and sophisticated designs that help you create a contemporary space to reflect your style. Several Moen® bath accessory collections carry the clean lines inherent in modern design.



**Moen® Bathroom Lighting**

Lighting fixtures are available in seven of the most popular Moen® bathroom collections. All of the styles can be mounted with globes facing either up or down.



In addition to high-end style, our lighting provides installation benefits. The quick connect wiring system allows installers to pre-wire the light fixture to the junction box, meaning there is no need to hold the fixture up to the wall during the wiring process. Glazed sockets help ensure the socket rings install with ease. Additionally, the UL®-listed fixtures are backed by the Moen® Warranty and industry-leading customer service.





### Decorative Hotel Shelves

Kingsley®, Eva® and Iso™ Decorative Hotel Shelves help create the luxurious, coordinated styling of an upscale hotel in your own home.



### Products That Complete Your Bath

All of our bath accessory collections feature a towel ring, a robe hook, both an 18-in. and a 24-in. towel bar and a paper holder. But there is so much more — tank levers, mirrors and glass shelves are offered in many collections.

### Knobs and Pulls

With our distinctive collection of knobs and pulls, you can create a perfectly matched kitchen or bath. Available in a selection of styles and finishes. See pages 24-25 for the complete product assortment of cabinet knobs and drawer pulls.



### Who Knew One Little Product Could Make Switching Out Shower Curtains and Liners So Easy?

Double shower curtain rings stand out for their style, functionality and ease of use! Their unique offset design separates the decorative curtain from the liner, allowing the liner to be hidden from view.



### Tension Curved Shower Rod

Now you can add up to an additional 5.5-in. of elbow room to your shower without drilling holes in the wall. The Tension Curved Shower Rod delivers the extra space you want with the convenience of an easy install that requires no tools or drilling and takes just minutes.



#### It Swivels!

Keep everyday essentials stylishly within reach. The Moen® Align® Swiveling Double Robe Hook comes in two on-trend finishes and offers a modern style that gives your bath a contemporary look and feel of home.



#### Exceptional Durability Across Finishes

With finishes that are designed to last a lifetime, Moen® products set the standard for exceptional beauty, reliability and innovative design.



#### Perfectly Matched Storage

The Moen® Wynford™ Corner Shower Basket features a traditional style that tucks neatly into any corner and perfectly matches the gentle curves of Wynford faucets. Hang at any height or use multiple baskets to create a tower of convenient storage.

#### Wallmount Mirror

Apply makeup or shave with new clarity and style. The double-sided Arris® Wallmount Mirror features swiveling arms with 5X magnification on one side and 1X on the other, and extends 13-in. from the wall to bring the convenience to you.



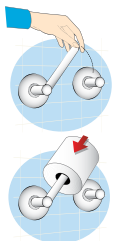
#### Bring A Perfectly Matched Room Together With Ease.

Whether you need towel bars for organization, grab bars for peace-of-mind, shelves for everyday items or robe hooks for everything else, Moen offers comprehensive suites of products designed to bring perfectly matched style and essential function to today's baths. Each collection's signature design details are carried throughout all pieces for the sink, shower, accessories and lighting so you can select the look you want and know the style and finish will match to perfection.



### Experienced, Professional Best-In-Class Customer Service

We'll be there when you need us. Our highly trained Moen customer and consumer service experts are dedicated to providing attentive service and outstanding customer care before and after your purchase – online, in person or on the phone at 1-800-BUY-MOEN.



#### Pivoting Paper Holders

Now there's no excuse to leave the bath tissue roll empty!

The innovative, spring-free design makes changing the roll quick and easy. Simply lift the arm, insert the new roll and set the arm back into place. The pivoting arm remains attached so there's no spring to lose and no extra parts to drop.

#### Limited Lifetime Warranty

Moen® products feature a Limited Lifetime Warranty.

Visit [moen.com](http://moen.com) for complete warranty information.



#### Decorative Tank Levers

Beautifully designed, our decorative tank levers install in minutes without the need for special tools or draining the tank. Available in a variety of styles and finishes, you can choose the decorative tank lever that best matches your bath décor. All are designed to fit most side, angle, front-mount or gravity-fed tanks.



Moen® Faucet-Match Accessories



*The industry's most distinctive portfolio of accessories is designed with styles and finishes to match Moen® faucets, making it easy to create a perfectly matched bath.*

## What's Your Style?



Among traditional collections, **Weymouth®** makes a bold statement. Distinctive accents include porcelain inlays that feature Euro-influenced decorative script and signature styling elements like a refined finial. Such elegant design details and distinctive finishing touches present a sense of uncommon luxury.



Smooth, graceful and elegant, the **Fina®** collection proves that sometimes it's the quiet statements that command the most attention. Fina® accessories complete the soft, modern look of your bath, with final masterstrokes adding nuance and depth.



Exposed pipes and industrial chic finishes are just a few of the downtown loft-inspired design details that come to life in **Arris®** accessories. Sharp angles and tubular lines dominate each piece in this modern collection.



**Waterhill®** accessories have a time-honored presence that gives your bath traditional charm.



Weymouth Accessories, Cabinet Knobs and Faucet shown



90° Accessories, Lighting and Faucet shown



The ultramodern **90°™** accessory collection boldly features precise angles. Its lines, its look and its durable functionality project a simple sophistication for today's baths.



With vintage design and masculine lines, the **Rothbury™** collection makes a relaxed, confident statement. Rothbury™ accessories let you maintain and extend this unique, assured look throughout your entire bath.



Sleek and simple, European influences clearly prevail in the bath with **Icon™** accessories. This collection's uncluttered style brings a quiet, clean theme to your bath.



Create a relaxed, yet traditional, style statement in the bath with **Wynford™** faucets and accessories. Multiple faucet designs and finish options give you a variety of decorating options to truly enhance and personalize your space.



From large, open master baths to minimalist powder rooms, **Align®** accessories bring a refreshed modern look to your home with simple lines and contemporary style.



The timeless transitional style of the **Voss™** collection is the perfect marriage of clean lines with a tailored structure. Not too fussy, not too bold, it makes a casual – yet confident – style statement that's designed to work with a variety of decorating styles.



The classic, antique look of the **Kingsley®** collection offers enthusiasts of traditional style the opportunity to make their bathrooms stand out. Understated details are inspired by turn-of-the-century designs.



With style that transcends time, **Brantford™** accessories feature distinguished design details. A range of traditional finish options further enhances the soft lines of this collection.



**Eva®** accessories have a sophistication that is both livable and enduring. With flowing curves, this transitional design offers an elegant appeal that works well in nearly any setting.



The softly modern style of the **Method™** collection features clean lines and a simple profile. The perfect blend of flat planes and sumptuous curves makes for an upscale look.



It's a classic design that will enhance any bath. The **Mason®** collection's rounded design is extroverted without being showy, substantial without being overbearing, bold without being brash. Matches Moen® Chateau® faucets.



*Eva Accessories, Lighting, Faucet and Icon Drawer Pulls shown*





*Moen® coordinating accessories are designed to enhance the beauty of your bath. With innovative products, like our space-enhancing curved shower rod, easy-loading pivoting paper holders, and decorative tank levers, Moen® products also enhance the functionality of the bath.*

## What's Your Style?



The **Aspen** collection's soft, subtle shapes take the edge off any setting, allowing form and function to flow as one.



The **Danbury**® collection's blend of bold and delicate, offers a discreet complement to a variety of bath décors.



The **Gilcrest**® collection's rich styling and fluted accents marry antique charm with contemporary sophistication.



It's modern streamlining combined with classic styling. **Glenshire**® accessories create a blend of old and new that's always in style.

Moen® Coordinating Accessories





The **Iso™** collection's look of telescoping design infuses industrial elements into European minimalism as it boldly, and beautifully, embraces the future.



The floating ball design and slender, shapely posts help **Lounge™** accessories lend a carefree spirit to their surroundings.



Rounded posts and solid contours give **Madison™** accessories a personality that's robust yet refined.



The **Preston™** collection's simplicity is its main motif; its low-key appearance acts as a subtle accent that complements the décor.



The softly curving, edged silhouette of the **Retreat®** collection adds a touch of sophistication and serenity to the bath.



The delicate, unadorned style of each **Sage®** accessory is a study in tasteful simplicity, imparting an air of calmness.



The look of handcrafted twists and curls on **Sienna®** accessories adds an enduring Old World character to the bath.



The repeating parallel rings and rounded end posts on **Stockton®** accessories calmly create a sense of order and stability.



With a chess-piece motif, the **Wembley®** collection of accessories produces an effect that is both smart and charming.



Slender posts and smooth, graceful lines make a delicately beautiful statement throughout the **Yorkshire** collection of accessories.



NEW!

YB5161

Voss™ Single-Globe Light



Moen® Lighting



*Whether your tastes lean traditional, modern or somewhere in between, Moen offers a bath lighting choice that will fit your style. Our distinctive lighting options are designed to accent some of our leading faucets. With seven collections to choose from, it's never been easier to tie together the look of your bathroom. Built in the Moen tradition, our lighting offers quality, durability and style.*



NEW!

YB8862

90°™ Two-Globe Light

YB9862  
Waterhill® Two-Globe Light



YB8262

Rothbury™ Two-Globe Light



YB2262  
Brantford™ Two-Globe Light



YB2862

Eva™ Two-Globe Light



YB8862  
90°™ Two-Globe Light



Bulbs not included.



# Moen® Knobs and Pulls

*With our distinctive collection of knobs and pulls, you can create a perfectly matched bath or kitchen décor and carry your style throughout the room.*



Weymouth® Knobs and Pulls



Waterhill® Knobs and Pulls



90°™ Knobs and Pulls



Rothbury™ Knobs and Pulls



Icon™ Knobs and Pulls



Kingsley® Knobs and Pulls



Iso™ Knobs and Pulls

Finish availability varies by SKU. Consult BA0400 for complete collection details.





From towels bars to towel  
rings, accessories work  
great in the kitchen.



Moen® Accessories in the Kitchen

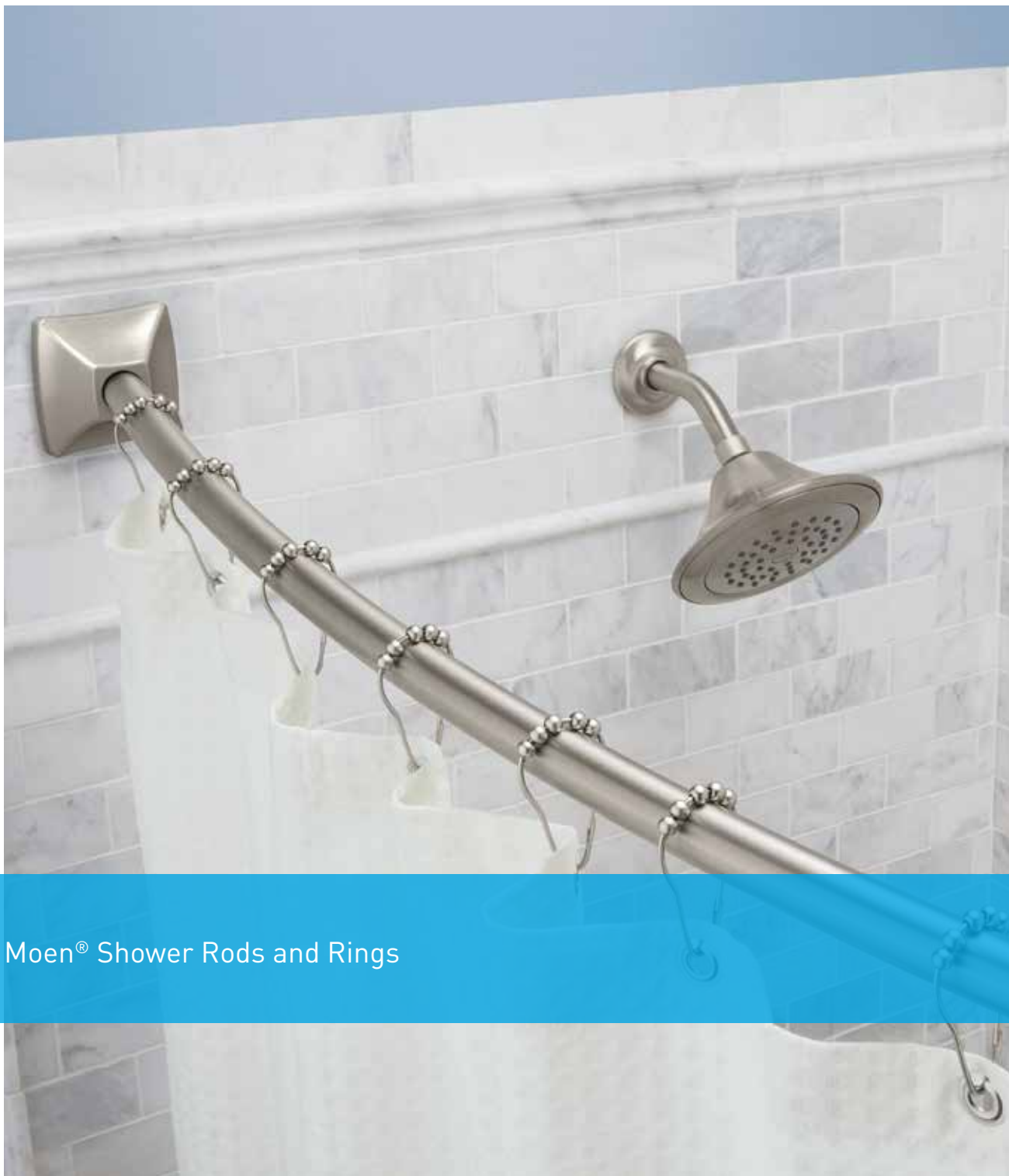
*Who says Moen Accessories are just for the bathroom?*

Consider a towel bar or towel ring beside the kitchen sink or on a kitchen island. Use a hook to hang potholders. Install a decorative shelf to house spices.



And don't forget matching cabinet knobs and pulls; they help you carry the style throughout your kitchen.





Moen® Shower Rods and Rings



*Moen® Curved Shower Rods allow you to maximize your space by providing extra elbow room in the shower. They also add an elegant and luxurious look to any bath and are available in three of today's popular finishes: Brushed Nickel, Chrome or Old World Bronze.*

*For the complete assortment of shower rods, ask your showroom consultant or visit [moen.com](http://moen.com)*

Shower curtain and shower curtain rings are not included with shower rods.

### Double Curved Shower Rod

The Double Curved Shower Rod allows you to transform your room without having to remodel!

- Provides up to 5.5-in. more elbow room in the shower
- Features decorative covers
- Separates the curtain and liner
- Adjusts from 57-in. to 60-in.
- Works with standard 72-in. x 72-in. shower curtains



Adjustable  
Curved Rod



More Elbow  
Room



Corrosion  
-resistant



Separates Curtain and Liner;  
Doubles as a Drying Rack

**PERMANENT**  
MOUNTING HOLDS  
STRONG, LASTS LONG



# PERMANENT MOUNTING HOLDS STRONG, LASTS LONG



More Elbow  
Room



Corrosion  
-resistant



Adjustable  
Curved Rod

## Adjustable Curved Shower Rod

- Adjusts to fit shower enclosures between 54-in. and 72-in.
- No cutting required
- Superior strength—weight load capacity of more than 120 lb. (based on independent lab testing)
- Pivoting flanges provide an easy, secure installation on inconsistent or uneven wall surfaces
- Provides up to 7.5-in. of additional elbow room in the shower
- Decorative covers snap on easily to conceal pivoting flanges and hide holes from previous shower rods
- Stainless steel construction
- Works with standard 72-in. x 72-in. shower curtains

## Flanges Pivot 180 Degrees!



## Double Shower Curtain Rings Complete Your Shower

Shower curtains and rods are not included with shower curtain rings.



Choice of decorative covers - choose from round or square! Each available in your choice of Brushed Nickel, Chrome or Old World Bronze.



Shower curtain and shower curtain rings are not included with shower rods.



# PERMANENT

MOUNTING HOLDS  
STRONG, LASTS LONG

## Fixed-Length Curved Shower Rod

- Available in 5-ft. and 6-ft. lengths
- Pivoting flanges provide an easy, secure installation on inconsistent or uneven wall surfaces
- Provides extra elbow room in the shower:
  - 5-ft. rod = up to 6-in. extra space
  - 6-ft. rod = up to 7.5-in. extra space
- Decorative covers snap on easily to conceal pivoting flanges and hide holes from previous shower rods
- Stainless steel construction
- Works with standard 72-in. x 72-in. shower curtains
- Available in your choice of Brushed Nickel, Chrome or Old World Bronze



More Elbow  
Room



Corrosion  
-resistant



Fixed-Length  
Curved Rod

## Flanges Pivot 180 Degrees!



Shower curtain and shower curtain rings are not included with shower rods.

## TENSION

MOUNTING INSTALLS  
AND REMOVES EASILY

## TENSION

MOUNTING INSTALLS  
AND REMOVES EASILY

with  
**FASTLOCK™**  
technology

### Tension Curved Shower Rod

In minutes you can add up to an additional 5.5-in. of elbow room to your shower and transform your bath.

- Easy installation: expand the bar to the correct size, apply tension and snap on the decorate covers
- Adjusts to fit spaces between 57-in. and 60-in.
- Works with standard 72-in. x 72-in. shower curtains
- Available in your choice of Brushed Nickel, Chrome or Old World Bronze



More Elbow  
Room



Corrosion  
-resistant



No Tools  
Required



Adjustable  
Curved Rod

### Decorative Tension Straight Shower Rod

No tools, no additional hardware, no long installation. In fact, our tension rods with FastLock™ technology can be up in a matter of minutes.

- Rod expands from 44-in. to 72-in.
- Stainless steel construction
- Quick, easy installation
- FastLock™ technology eliminates “wall walking”
- Works with standard 72-in. x 72-in. shower curtains
- Available in your choice of Brushed Nickel, Chrome or Old World Bronze



No Tools  
Required



Corrosion  
-resistant



Adjustable  
Straight Rod



Buy it for looks. Buy it for life.®

Possession of this catalog by any person is not an offer to sell them or anyone else the product listed. Prices and specifications are subject to change without notice. This catalog supersedes all previous Moen catalogs. Although descriptions are believed to be correct at publication approval, accuracy cannot be guaranteed. Moen reserves the right to make changes from time to time, without notice or obligation, and to change or discontinue models. "Buy it for looks. Buy it for life." and The Moen Waterdrop logo are registered trademarks of Moen Incorporated. Align, Arris, Fina, Danbury, Eva, Gilcrest, Glenshire, Kingsley, Mason, Moen, Pro-Fit, Retreat, Sage, Sienna, Stockton, Vestige, Waterhill, Wembley and Weymouth are registered trademarks of Moen Incorporated. 90°, Aspen, Brantford, Icon, Iso, Lounge, Madison, Method, Preston, Rothbury, Wynford and Voss are trademarks of Moen Incorporated. Printed in USA. ©2015.

**U.S. Headquarters:**

**Moen Incorporated**

25300 Al Moen Drive, North Olmsted, OH 44070-8022

1-800-BUY-MOEN

**Canada Headquarters:**

**Moen**

2816 Bristol Circle, Oakville, Ontario L6H 5S7

1-800-465-6130

Connect with us:  
[moen.com/social](http://moen.com/social)

Visit our web site at [moen.com](http://moen.com)

